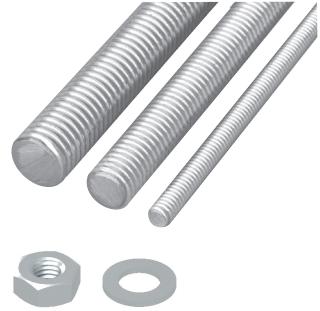


M10 Threaded Stud & Accessories

Threaded rod, also known as a stud, is a metal rod with threads rolled out. Supplied in pre-cut lengths 100mm to 225mm to enable easy fixing of the cleat to 41mm wide steel channel or cable ladder rungs.



Code	Description	Pack QTY
M10-100	M10 x 100mm BZP Stud	10
M10-125	M10 x 125mm BZP Stud	10
M10-150	M10 x 150mm BZP Stud	10
M10-200	M10 x 200mm BZP Stud	10
M10-225	M10 x 225mm BZP Stud	10
M10-FN	M10 Hexagon Full Nut	100
M10-W	M10 Flat Washer	100

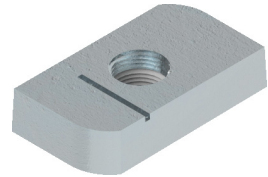


Channel Nuts

Channel nuts are one of the main components of strut system. They feature indentations that fit onto the lips of strut channels, providing gripping strength to secure threaded rod and other hardware to struts.



Code	Description	Pack QTY
ZEB6	M6 BZP channel nut (no spring)	100
ZEB8	M8 BZP channel nut (no spring)	100
ZEB10	M10 BZP channel nut (no spring)	100
ZEB12	M12 BZP channel nut (no spring)	100



Code	Description	Pack QTY
ZEBS6	M6 BZP Short spring channel nut	100
ZEBS8	M8 BZP Short spring channel nut	100
ZEBS10	M10 BZP Short spring channel nut	100
ZEBS12	M12 BZP Short spring channel nut	100



Code	Description	Pack QTY
ZEBL6	M6 BZP Long spring channel nut	100
ZEBL8	M8 BZP Long spring channel nut	100
ZEBL10	M10 BZP Long spring channel nut	100
ZEBL12	M12 BZP Long spring channel nut	100