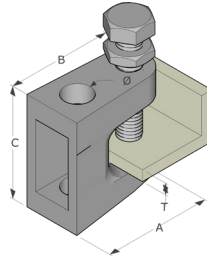
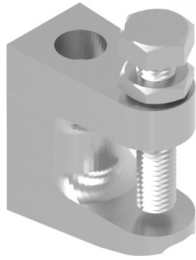


Fixing & Security | GIRDER FIXING SYSTEMS

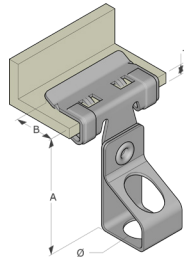
GIRDER CLIPS



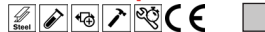
Girder Clips for Threaded Rod



Code	(T)	Ø	(A)	(B)	(C)	Load	Material	Box QTY
						Rating Kg	Finish	
FC-7	Max 19	7.0	50.0	42.0	45.0	120.0	F1	25
FC-9	Max 19	9.0	50.0	42.0	45.0	120.0	F1	25
FC-11	Max 19	11.0	50.0	42.0	45.0	250.0	F1	25
FC-13	Max 23	13.0	59.0	49.0	54.0	350.0	F1	25
FC-6T	Max 19	M6	50.0	42.0	45.0	120.0	F1	25
FC-8T	Max 19	M8	50.0	42.0	45.0	120.0	F1	25
FC-10T	Max 19	M10	50.0	42.0	45.0	250.0	F1	25
FC-12T	Max 23	M12	59.0	49.0	54.0	350.0	F1	25



Girder Clamps for Threaded Rod



Code	(T)	Ø	(A)	(B)	Load	Material	Box QTY
					Rating Kg	Finish	
AH153-AM127	1.5 - 3.0	12.7	44.0	12.5	68.0	F8+	25
AH38-AM127	3.0 - 8.0	12.7	46.0	20.3	68.0	F8+	25
AH814-AM127	8.0 - 14.0	12.7	54.0	20.3	68.0	F8+	25
AH1420-AM127	14.0 - 20.0	12.7	66.0	26.6	68.0	F8+	25
AH153-AM6T	1.5 - 3.0	M6	44.0	12.5	68.0	F8+	25
AH38-AM6T	3.0 - 8.0	M6	46.0	20.3	68.0	F8+	25
AH814-AM6T	8.0 - 14.0	M6	54.0	20.3	68.0	F8+	25
AH1420-AM6T	14.0 - 20.0	M6	66.0	26.6	68.0	F8+	25
AH153-AM8T	1.5 - 3.0	M8	44.0	12.5	68.0	F8+	25
AH38-AM8T	3.0 - 8.0	M8	46.0	20.3	68.0	F8+	25
AH814-AM8T	8.0 - 14.0	M8	54.0	20.3	68.0	F8+	25
AH1420-AM8T	14.0 - 20.0	M8	66.0	26.6	68.0	F8+	25
AH153-AM10T	1.5 - 3.0	M10	44.0	12.5	68.0	F8+	25
AH38-AM10T	3.0 - 8.0	M10	46.0	20.3	68.0	F8+	25
AH814-AM10T	8.0 - 14.0	M10	54.0	20.3	68.0	F8+	25
AH1420-AM10T	14.0 - 20.0	M10	66.0	26.6	68.0	F8+	25

All dimensions in mm except where stated