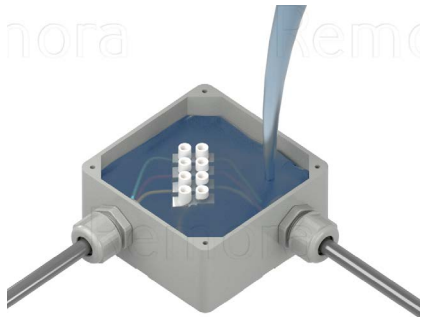


# Potting Compounds

Widely used in the electrical and electronic industry where resistance to shock and vibration is essential. Potting Compound is used during the process to fill up the enclosure that houses the PCBs or Terminals with a solid or gelatinous substance. The resultant is total encapsulation thus offering the required mechanical protection while also prohibiting moisture and corrosive agents.



## Potting Gel

Remora Potting Gel is a two component gel with very high dielectric, fast cross linking, thermal and sealing characteristics, contained in two bottles: the needed quantity of the two components is poured in the small container in the range of 1:1, then mixed with the supplied mixing spoon and poured in the particular to fill.

- It gives a degree of protection higher than IP68
- Non toxic and safe
- Fast in cross linking (<10'), without temperature increase
- It cross links also at low temperature
- Low viscosity
- Re-enterable also after long working periods
- Without shelf-life
- For installation up to 1kV
- Dielectric strength: >18 kV/mm

**Standard:** BS EN 62305-3 / BS EN 50164-5



Code	Description	Gel Volume
MG300	2 Bottles Only	300ml
MG1000	2 Bottles, 1 Mixing Container, 1 Mixing Spoon	1000ml
MG2000	2 Bottles, 1 Mixing Container, 1 Mixing Spoon	2000ml
MG10000	2 Tanks, 1 Mixing Container, 1 Mixing Spoon	10000ml



## PlastiForm Electrical Weatherproof Compound

Weatherproof Compound is soft enough to be readily moulded around terminals, intricate controls or pressed into cavities.

- Protects against corrosion
- Easy to apply
- Harmless to the environment
- Temperature range -20°C to 80°C
- Without shelf-life
- For installation up to 1kV
- Electrical breakdown at 20°C - 18kV/ mm



Code	Description	Weight (Kg)	Colour
R391	Non-hardening Plastic Weatherproof Compound	0.50	Reddish Brown