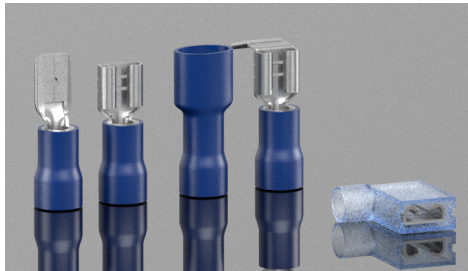


Ident & Terminals | PRE-INSULATED SPADE TERMINALS

PRE-INSULATED CRIMP TERMINALS

Pre-Insulated Spade Terminals

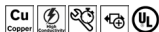
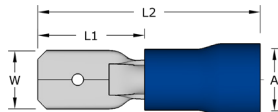
Made from high conductivity copper, these terminals are electro-tin plated for excellent conductivity and resistance to corrosion. Pre-Insulation is manufactured from Vinyl with a flared barrel for easy wire insertion.



Pre-Insulated Male Spade Terminals

Pre-insulated male spade terminals.

Temperature Range: -10°C to 75°C
Material: Tin Plated Copper / Vinyl Insulation
Voltage: 300V
Colour: Red, Blue, Yellow

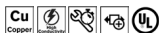
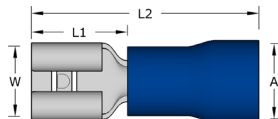


Code	Colour	Range mm ²	Tab	ID (A)	Length (L1)	Length (L2)	Width (W)	Pack QTY
RTAB28	Red - 19A Max	0.5-1.5	0.5 x 2.8	1.7	11.3	18.7	2.8	100
RTAB48		0.5-1.5	0.8 x 4.8	1.7	11.3	19.2	4.8	100
RTAB63		0.5-1.5	0.8 x 6.4	1.7	11.3	20.8	6.35	100
BTAB48	Blue - 27A Max	1.5-2.5	0.8 x 4.8	2.3	11.3	19.2	4.8	100
BTAB63		1.5-2.5	0.8 x 6.4	2.3	11.3	20.8	6.40	100
YTAB63	Yellow - 48A Max	4.0-6.0	0.8 x 6.4	3.4	11.0	24.0	6.35	100

Pre-Insulated Female Spade Terminals

Pre-insulated female spade terminals.

Temperature Range: -10°C to 75°C
Material: Tin Plated Copper / Vinyl Insulation
Voltage: 300V
Colour: Red, Blue, Yellow



Code	Colour	Range mm ²	Tab	ID (A)	Length (L1)	Length (L2)	Width (W)	Pack QTY
RFS28-5	Red - 19A Max	0.5-1.5	0.5 x 2.8	1.7	10.5	18.8	3.2	100
RFS28-8		0.5-1.5	0.8 x 2.8	1.7	10.5	18.8	3.2	100
RFS48-5		0.5-1.5	0.5 x 4.8	1.7	10.5	19.0	5.0	100
RFS48-8		0.5-1.5	0.8 x 4.8	1.7	10.5	19.0	5.0	100
RFS63	Blue - 27A Max	0.5-1.5	0.8 x 6.4	1.7	10.5	20.8	6.6	100
BFS48-5		1.5-2.5	0.5 x 4.8	2.3	10.5	19.0	5.0	100
BFS48-8		1.5-2.5	0.8 x 4.8	2.3	10.5	19.0	5.0	100
BFS63		1.5-2.5	0.8 x 6.4	2.3	10.5	20.8	6.6	100
BFS83		1.5-2.5	0.8 x 8.0	2.3	10.5	24.5	8.2	100
YFS63	Yellow - 48A Max	4.0-6.0	0.8 x 6.4	3.4	13.0	23.8	6.6	100
YFS95		4.0-6.0	1.2 x 9.4	3.4	13.0	30.0	10.0	100

All dimensions in mm except where stated