

HAZARDOUS AREA CCG™ CABLE GLANDS | Cable Glands

DUAL SEAL INDOOR/OUTDOOR - UNARMoured

CCG A2EX Cable Gland

The A2EX Double Compression Gland is designed for use with unarmoured, elastomeric and plastic cables in hazardous areas. Incorporating specially formulated dual elastomeric displacement seals giving superior cable retention and explosion protection.

- For indoor, outdoor, Group II, III, Zone 1, 2, 20, 21 and 22 hazardous areas.
- Inner seal, seals on the cable sheath. Harder outer seal grips the cable, giving it superior cable retention and IP rating.
- Manufactured from high-quality brass (Marine Grade Electroless Nickel Plated™).
- Supplied complete with IP sealing washer (Parallel Threads).

Equipment Protection Levels:

IECEx/INMETRO: Ex db IIC Gb, Ex eb IIC Gb, Ex ta IIIC Da, Ex nR IIC Gc
ATEX/UKEX: Ⓜ II 2/3G 1D, Ex db IIC Gb, Ex eb IIC Gb, Ex ta IIIC Da, Ex nR IIC Gc

Conformance: Standard:

IEC/BS EN IEC/BS EN 62444, 6121
IECEX IEC 60079 Part 0, 1, 7, 15, 31
ATEX EN 60079 Part 0, 1, 7, 31
EN 60079 Part 0, 15
UKEX BS EN 60079 Part 0, 1, 7, 31
BS EN 60079 Part 0, 15

Certification:

CML 14CA364
IECEX CML 20.0011
CML 20ATEX1026
CML 22ATEX4116
CML 21UKEX1013
CML 22UKEX4117
DTS-01

Deluge Protection:

Marine: ABS IEC/EN 60079 Part 0, 1, 7, 15, 31 and IEC 60529
DNV IEC/EN 60079 Part 0, 1, 7, 15, 31

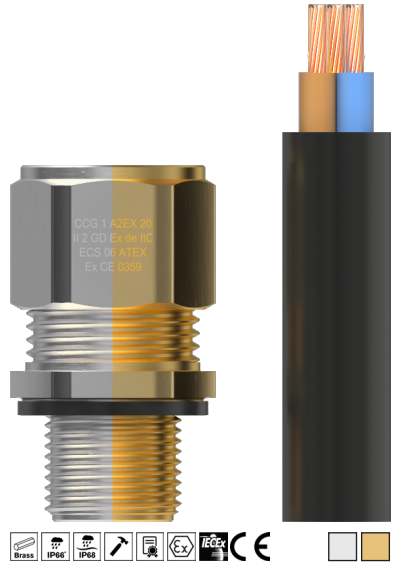


Protection: IP66 / IP68 (100m - Parallel) IEC 60529

Temperature Range: Standard -60°C to 95°C / Extreme -60°C to 160°C

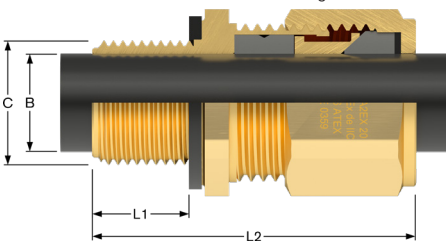
Material (Gland): Brass / Marine Grade Electroless Nickel Plated™

Material (Seal): Standard Thermoset Elastomer or Extreme Temperature Seals

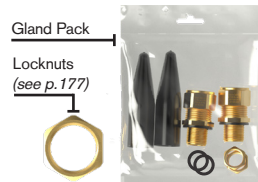


Code	Kit Code	Low Smoke LS Kit Code	Reference Size	Cable OD (B)		Gland Length (L2)	Thread Entry (C)	Length (L1)	A/F	A/C
				Min	Max					
053616A-UN	GPA2EX16-UN	GPA2EX16LS-UN	00 - 16ss	3.0	8.5	40.0	M16 x 1.5	15.0	24.0	27.0
053600A-UN	GPA2EX00-UN	GPA2EX00LS-UN	00 - 20ss	3.0	8.5	40.0	M20 x 1.5	15.0	24.0	27.0
05360A-UN	GPA2EX0-UN	GPA2EX0LS-UN	0 - 20s	7.0	12.0	40.0	M20 x 1.5	15.0	24.0	27.0
053601A-UN	GPA2EX1-UN	GPA2EX1LS-UN	1 - 20	11.0	15.0	45.0	M20 x 1.5	15.0	27.0	30.0
053602A-UN	GPA2EX2-UN	GPA2EX2LS-UN	2 - 25	15.0	20.0	45.0	M25 x 1.5	15.0	35.0	39.0
053603A-UN	GPA2EX3-UN	GPA2EX3LS-UN	3 - 32	20.0	26.5	45.0	M32 x 1.5	15.0	42.0	47.0
053604A-UN	GPA2EX4-UN	GPA2EX4LS-UN	4 - 40	26.0	34.0	53.0	M40 x 1.5	15.0	52.0	59.0
053605A-UN	GPA2EX5-UN	GPA2EX5LS-UN	5 - 50	34.0	44.5	61.0	M50 x 1.5	15.0	65.0	73.0
053606A-UN	GPA2EX6-UN	GPA2EX6LS-UN	6 - 63	44.5	56.5	67.0	M63 x 1.5	15.0	80.0	90.0
053607A-UN	GPA2EX7-UN	GPA2EX7LS-UN	7 - 75	56.0	67.5	69.0	M75 x 1.5	15.0	96.0	108.0
053608A-UN	GPA2EX8-UN	GPA2EX8LS-UN	8 - 80	59.0	69.0	88.0	M80 x 2.0	20.0	96.0	108.0
053609A-UN	GPA2EX9-UN	GPA2EX9LS-UN	9 - 90	73.0	81.5	90.0	M90 x 2.0	20.0	111.0	125.0
053610A-UN	GPA2EX10-UN	GPA2EX10LS-UN	10 - 100	81.0	91.0	90.0	M100 x 2.0	20.0	125.0	141.0

- For Nickel Plated remove -UN when ordering



- Kits supplied with;
2 glands, 2 locknuts, 2 PVC or LS shrouds (M16-M32)
1 gland, 1 locknut, 1 PVC or LS shrouds (M40-M100)



Call the Remora sales team at 01226 352 000