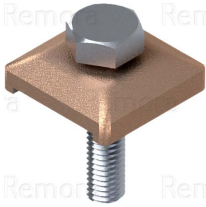


# Earthing & Lightning | EARTH RODS & ACCESSORIES

## EARTH RODS and ACCESSORIES



### 'B' Bond

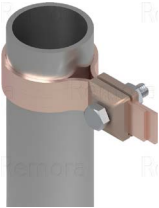
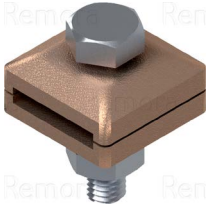
'B' type Bond connections are designed to bond either copper or aluminium conductor to flat metal surfaces

**Material:** Gunmetal

**Standards:** BS 7430



Code	Maximum Tape Width	Bolt Size	Conductor Material
BN105	26	M10	Copper



### RWP Bond Clamp

RWP type Bond connections are designed to connect flat conductor to circular objects ie pipework and hand rails etc.

**Material:** Gunmetal

**Standards:** BS 7430



Code	Maximum Tape Width	Bolt Size	Conductor Material
BN115	26	M10	Copper



### EC1 Earthing Clamp

EC1 earth clamp for large diameter circular objects ie. pipework and hand rails etc.

**Strap Material:** Stainless Steel (304 grade)

**Body Material:** Phosphorus Bronze

**Label Material:** Aluminium



Code	Terminal Size	Strap Length	Pipe Diameter
EC1	2.5 - 10.0mm <sup>2</sup>	1600 (63")	50.0 to 450.0