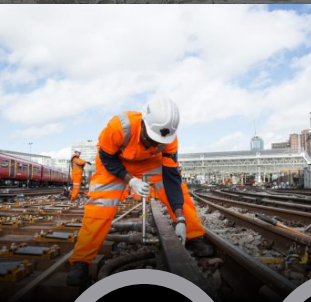
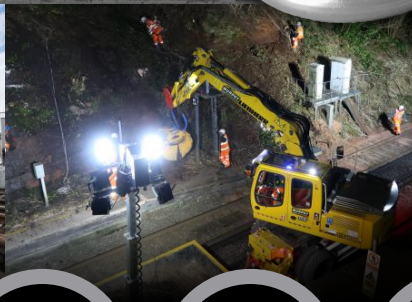


**Ensure your
work place is
safely lit and
secure...**



**360° Light
Reduces
Shadow**



**Improve
Health &
Safety**

**IP65
Rated**



**Low
Power
Consumption**

**Available in:
110v
and
240v**

The UtilityLite is a continuous flex of LEDs (180 per metre) encapsulated in a clear, hardwearing flexible plastic sheath. Assembled on a cable reel at lengths from 2m to 100m. The unit is highly portable and easy to install on any site by an unskilled operative.

Unlike traditional floodlights that are sited at single locations around a work site the UtilityLite's flexibility enables the entire work area to be surrounded by a continual LED flex of light and thus is lit in it's entirety. Due to this all round light emitting capability shadow and dark spots are greatly reduced or in many cases totally eliminated. As the work area reduces or expands UtilityLite can be simply repositioned with ease.

| Code | Voltage | Length | Watts/m |
|-------------|---------|--------|---------|
| LED-110v10M | 110v | 10m | 12.5 |
| LED-110v25M | 110v | 25m | 12.5 |
| LED-230v25M | 240v | 25m | 12.5 |

UtilityLite can be supplied with durable rubberised brackets that allows it to be attached to barriers, railings and surrounding structures.

| | |
|-----------|--|
| LED-BClip | Rubber Barrier Strips 2-3 required per barrier |
|-----------|--|

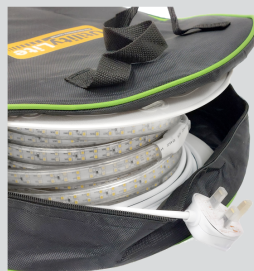
Specification

| | |
|------------------------------|---------------|
| LED per metre | 180 |
| Power consumption per metre | 12.5W |
| Voltage | 110V |
| CO2 Emissions per metre/8hrs | 30.8kg |
| Colour Temperature | 5000k |
| Lumens per metre | 1100Lm |
| Lux per metre | 60-70Lux |
| Beam Angle | 120° |
| CRI | >80 |
| IP Rating | IP65 |
| Weight (25m Roll) | 4.75kg |
| Dimensions (25m Roll) | 390x280x200mm |

CO2 Emissions Comparison

| Lighting Technology (800 Lumens) | Incandescent (60W) | Halogen (42W) | CFL (14W) | UtilityLite (12.5W p/m) |
|--|--------------------|---------------|-----------|-------------------------|
| Daily Kwh Consumed (@8hr) | 0.48 | 0.34 | 0.11 | 0.1 |
| Annual Kwh Consumed (@8hr/day) | 175.2 | 124.1 | 40.15 | 35.0 |
| CO2 Produced (Coal Based Power Generation) | 152.42Kg | 107.96Kg | 34.93Kg | 30.8Kg* |

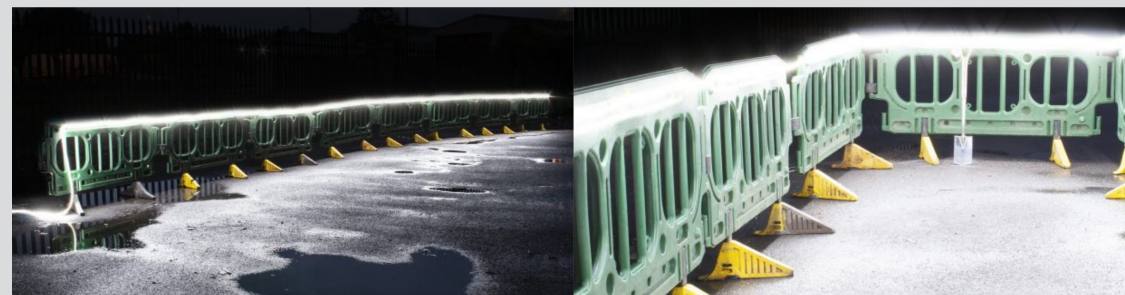
* 1m length of UtilityLite = 1100 Lm



Halogen Floodlight Visual - Typical area lit by four floodlights
Narrow lighting angles resulting in reduced illuminated area, shortfalls and shadows.



UtilityLite Visual - Typical area lit by a perimeter of UtilityLite LED Flex.
Much reduced dark areas with a larger area of the site safely illuminated.



UK patent pending no. GB2109608.6

Ensure your work place is safely lit and secure, choose UtilityLite.

UK patent pending no. GB2109608.6

Ensure your work place is safely lit and secure, choose UtilityLite.

LiteReel

Developed in the UK, **UtilityLite** LiteReel is the ultimate onsite lighting system designed for the construction industry. With **180 high output LEDs** per metre it is durable, light and compact and also **IP65** rated.

- Improve health and safety targets
- Can be reused or relocated
- No need for a qualified electrician
- Simple plug and play system
- Increase visibility of site access routes
- Available in lengths of 10m and 25m
- Reduce risks from slips, trips and other hazards
- Easily installed by a non-skilled person
- UK patent pending no. GB2109608.6

