

Junction Boxes & Enclosures

Junction Boxes & Enclosures

Junction boxes and enclosures are a main stream product for Remora, offering efficient solutions to many of quandaries from our diverse range. It might just be a IP66 enclosure for jointing, a utility or handfit junction box having metric threaded entries so there is no need for drilling and tapping, or even a EExe version for those trickier applications. We are sure we have the right enclosure system for you.

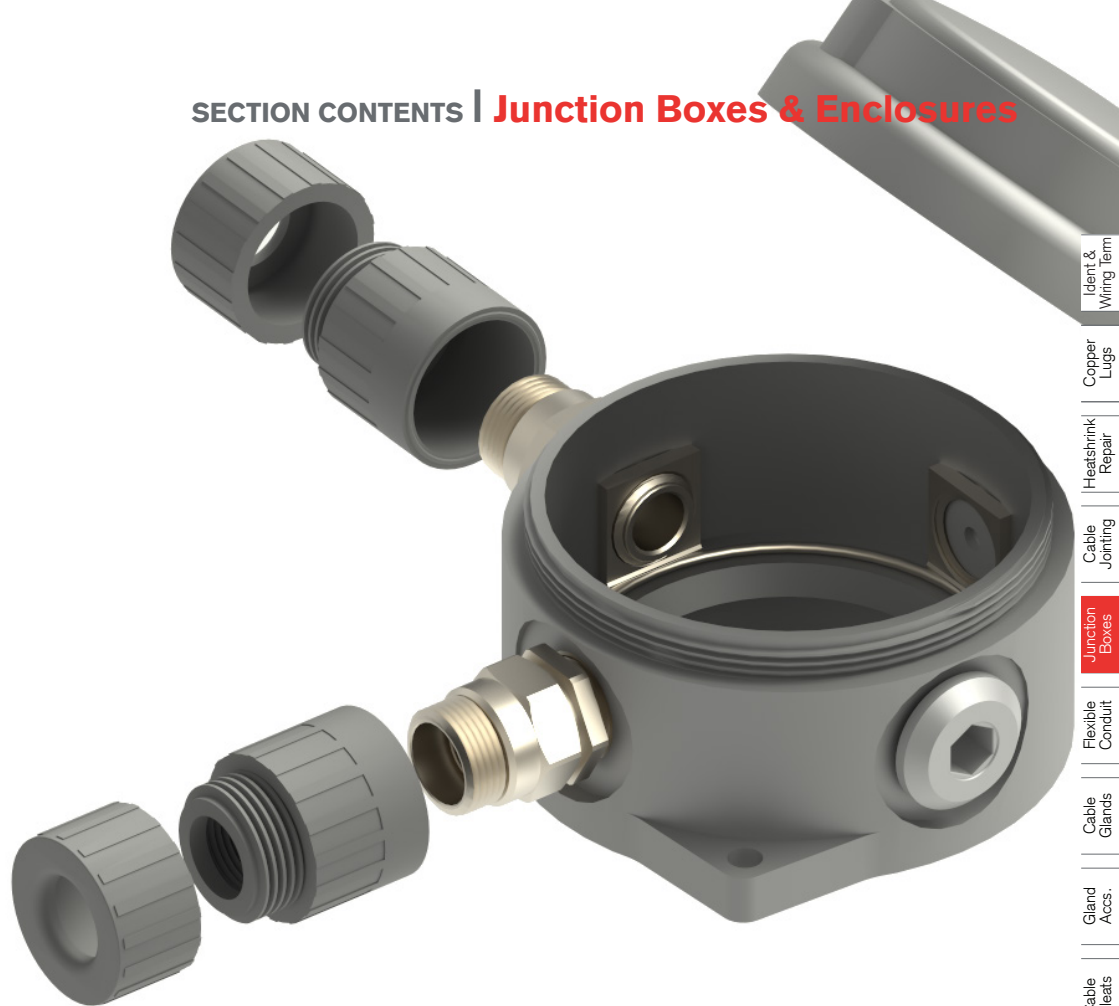


IP66 Enclosures: M20 and M25 Entries Fitted with flexible waterproof membrane... Just push your cable through! Each entry is also threaded to accept an M20 cable gland. Premium quality UV Proof, Shatter Proof, and Fire Resistant construction means it's suitable for indoor and outdoor installation under driving rain and harsh sunlight. Quick-release locking screws make for quick and easy installation and inspection. 100% Corrosion Proof. Supplied with mounting plate.

Industrial GRP: The Utility and Handfit range of junction boxes offers up to 4 way versatility that is available from M20s – M32. If it is a Y box you are looking for then that option is under the Handfit or Posifit Box range. The Posifit Box range complies to CENELEC / ATEX Zones 1, 2, 21 & 22 EExe II. A wide range of terminal assemblies are available which will be supplied and fitted into the Posifit box.

GRP ATEX: To further compliment our enclosure range, the IP66 Polyester (GRP) ATEX product is available in 4 popular sizes which includes a pre assembled terminal block arrangement. All enclosures have machined gland entries and certified stopping plugs.

SECTION CONTENTS | Junction Boxes & Enclosures



IP66 Enclosures & Acc.

P. 72 | 73



Potting Compounds

P. 74 |



IP68 Enclosures

P. 75 | 77



ATEX Enclosures

P. 78 | 81



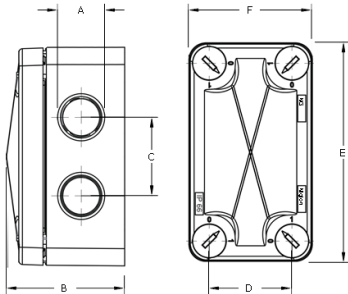
IP66 WATERPROOF JUNCTION BOX

IP66 Enclosures

Membrane Junction Box



M20 Entry Fitted with flexible waterproof membrane... Just push your cable through! Each entry is also threaded to accept an M20 cable gland. Premium quality UV Proof, Shatter Proof, and Fire Resistant construction means it's suitable for indoor and outdoor installation under driving rain and harsh sunlight. Quick-release locking screws make for quick and easy installation and inspection. 100% Corrosion Proof. Supplied with mounting plate.



IP66 Waterproof Junction Box - Slimline

- Offers IP66 Protection
- Integrated gasket seal
- Easy installation using supplied mounting bracket
- 6x M20 membrane threaded cable entries

Protection: IP66
Temperature Range: -30°C to +100°C
Glow Wire Test: 750°C
Voltage: 400V
Enclosure Material: PP+GF
Gasket Material: TPE
Standards: CE / Rohs / UV V0

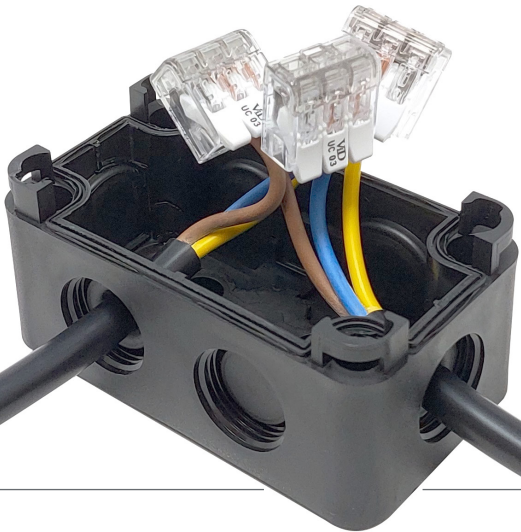


Code	(A)	(B)	(C)	(D)	(E)	(F)	Pack QTY
JB86-50B-Slim	6x M20	50	31	34	86	50	5

Connectors (see p.62)



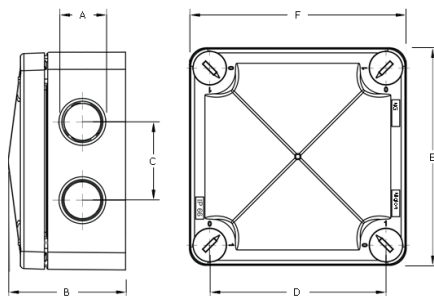
Lever Terminals (see p.62)



IP66 Enclosures

Membrane Junction Box

M20 and M25 Entries Fitted with flexible waterproof membrane... Just push your cable through! Each entry is also threaded to accept an M20 cable gland. Premium quality UV Proof, Shatter Proof, and Fire Resistant construction means it's suitable for indoor and outdoor installation under driving rain and harsh sunlight. Quick-release locking screws make for quick and easy installation and inspection. 100% Corrosion Proof. Supplied with mounting plate.



IP66 Waterproof Junction Box

- Offers IP66 Protection
- Integrated gasket seal
- Easy installation using supplied mounting bracket
- JB86-50 = 8x M20 membrane threaded cable entries
- JB96-60 = 5x M20 + 1x M25 membrane threaded cable entries

Protection: IP66

Temperature Range: -30°C to +100°C

Glow Wire Test: 750°C

Voltage: 400V

Enclosure Material: PP+GF

Gasket Material: TPE

Standards: CE / Rohs / UV V0



Code	(A)	(B)	(C)	(D)	(E)	(F)	Pack QTY
JB86-50B	8x M20	50	31	70	86	86	5
JB96-60B	5x M20 + 1x M25	60	31	70	96	96	5

Earthing Plate for JB86-50B

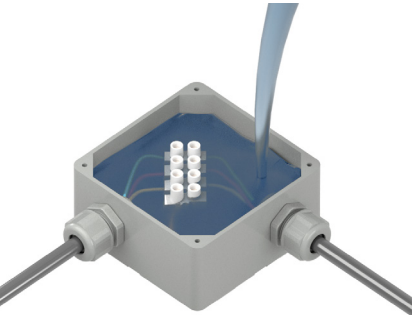


Code	Description	Pack QTY
SGP-8650	JB86-50 Single Earthing Plate	2
DGP-8650	JB86-50 Double Earthing Plate	2

POTTING COMPOUNDS

Potting Compounds

Widely used in the electrical and electronic industry where resistance to shock and vibration is essential. Potting Compound is used during the process to fill up the enclosure that houses the PCBs or Terminals with a solid or gelatinous substance. The result is total encapsulation thus offering the required mechanical protection while also prohibiting moisture and corrosive agents.



Potting Gel

Remora Potting Gel is a two component gel with very high dielectric, fast cross linking, thermal and sealing characteristics, contained in two bottles: the needed quantity of the two components is poured in the small container in the range of 1:1, then mixed with the supplied mixing spoon and poured in the particular to fill.

- It gives a degree of protection higher than IP68
- Non toxic and safe
- Fast in cross linking (<10'), without temperature increase
- It cross links also at low temperature
- Low viscosity
- Re-enterable also after long working periods
- Without shelf-life
- For installation up to 1kV
- Dielectric strength: >18 kV/mm

Standard: BS EN 62305-3 / BS EN 50164-5



Code	Description	Gel Volume
MG300	2 Bottles Only	2x 150ml
MG1000	2 Bottles, 1 Mixing Container, 1 Mixing Spoon	2x 500ml
MG10000	2 Tanks, 1 Mixing Container, 1 Mixing Spoon	2x 50000ml



PlastiForm Electrical Weatherproof Compound

Weatherproof Compound is soft enough to be readily moulded around terminals, intricate controls or pressed into cavities.

- Protects against corrosion
- Easy to apply
- Harmless to the environment
- Temperature range -20°C to 80°C
- Without shelf-life
- For installation up to 1kV
- Electrical breakdown at 20°C - 18kV/ mm



Code	Description	Weight (Kg)	Colour
R391	Non-hardening Plastic Weatherproof Compound	0.50	Reddish Brown



Utility Box Assemblies

Utility Box Assemblies offer versatility & adaptability. The 2-way option commonly being utilised as a through box for jointing 2 Steel Wire Armoured cable via the IPlus Corrosion Guard glands. While the 3-way option also offers in addition to the 2-way, a tap off point for flex none armoured cable via the PosiFlex gland. In both options, all unused ways will retain the IP68 blanking plugs. Earth continuity is made very easy by use of the internal ring, freeing up more space for the connection terminals.

Utility Box Assemblies

- No exposed metal parts
- Dust and water proof to IP68 with CCG glands IPlus & PosiFlex Glands
- One box offers 1, 2, 3 or 4 way versatility
- No drilling or tapping of cable entries required
- Mounting studs provided for DIN rail terminals
- Internal earth continuity ring to earth gland entries
- Screw on lid provides ease of installation locked with a special key to prevent unauthorised tampering and ease of installation

Utility Box

Protection: IP66 / IP68

Temperature Range: -60°C to 110°C

Material: Impact, Corrosion and UV Resistant Glass Reinforced Polyester

Colour: Grey

IPlus & PosiFlex Glands

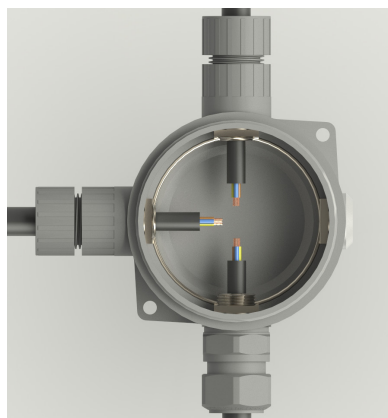
Protection: IP66 / IP68

Temperature Range: -65°C to 120°C

Material (Gland): Brass (Nickel Plated) BS 2874 / EN 12164

Material (Shroud/Body): Glass Reinforced Polyester / PBT

Material (Seal): Thermoset Elastomer



Utility Box 2 Way Assemblies

Through box assembly. IP66/67/68 weatherproof suitable for indoor / outdoor use, above and below ground. Designed to join two steel wire armoured cables together.

Code	Entry Thread	Glands	Armoured Cable OD
102101/A1	M20 x 1.5	2x M20s	11.5 - 16.0
102101/A2	M20 x 1.5	2x M20	14.5 - 20.5



Utility Box 3 Way Assemblies

Through box assembly. IP66/67/68 weatherproof suitable for indoor / outdoor use, above and below ground. Designed to join two steel wire armoured cables together with flex loop off option.

Code	Entry Thread	Glands	Armoured Cable OD	Unarmoured Cable OD
102101/A3	M20 x 1.5	2x M20s + 1x M20ss	11.5 - 16.0	3.0 - 8.0
102101/A4	M20 x 1.5	2x M20s + 1x M20s	11.5 - 16.0	7.0 - 11.5
102101/A5	M20 x 1.5	2x M20 + 1x M20	14.5 - 20.5	11.0 - 15.0

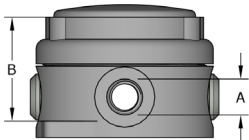
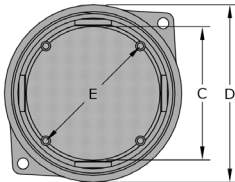
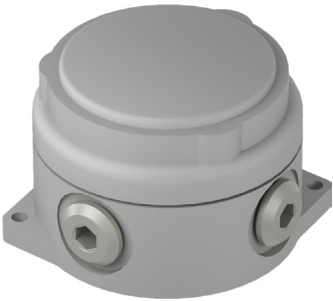


UTILITY JUNCTION BOX

Utility Box

IP68 GRP 4-Way Junction Box

The Utility Box is a general purpose junction box suitable for all surface industrial applications. It is manufactured from impact, corrosion and UV resistant glass reinforced polyester compound and provides 1,2,3 or 4 way versatility. Screw on lid provides ease of installation and when locked with locking key prevents unauthorised tampering.



Utility Box

- No exposed metal parts
- Dust and water proof to IP68 when used with approved CCG glands
- One box offers 1, 2, 3 or 4 way versatility for reduced stock holding
- No drilling or tapping of cable entries required
- Mounting studs provided for DIN rail terminals
- Internal earth continuity ring to earth all gland entries
- Screw on lid provides ease of installation locked with a special key to prevent unauthorised tampering and ease of installation

Protection: IP66 / IP68

Temperature Range: -60°C to 110°C

Material: Impact, Corrosion and UV Resistant Glass Reinforced Polyester

Colour: Grey



Code	Reference Size	(A)	(B)	(C)	(D)	(E)
102101	1 - M20	M20 x 1.5	62	80	120	70
102102	2 - M25	M25 x 1.5	66	108	150	97

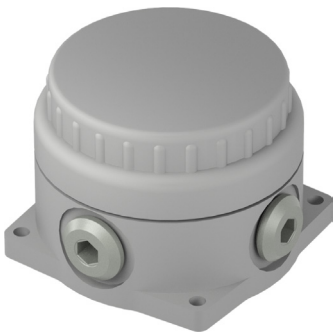


Utility Box Locking Keys

Anti-tamper locking keys.

Code	Reference Size	Box Code
UTS1	1 - M20	102101
UTS2	2 - M25	102102





Handifit Box

IP68 GRP 4-Way Junction Box

The Handifit Box is an industrial junction box suitable for all surface applications. Available in five different sizes to cover small lighting wiring applications to project where greater space is required. Manufactured from impact, corrosion and UV resistant glass reinforced polyester compound, and this provides 1,2,3 or 4 way versatility. Screw on lid provides ease of installation and when locked with locking key prevents unauthorised tampering.

Handifit Box

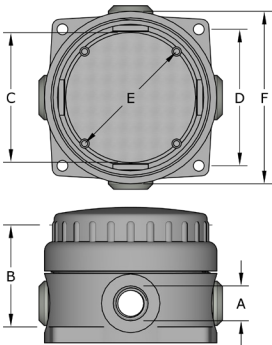
- No exposed metal parts
- Dust and water proof to IP68 when used with approved CCG glands
- One box offers 1, 2, 3 or 4 way versatility for reduced stock holding
- No drilling or tapping of cable entries required
- Mounting studs provided for DIN rail terminals
- Internal earth continuity ring to earth all gland entries
- Screw on lid provides ease of installation locked with a special key to prevent unauthorised tampering and ease of installation

Protection: IP66 / IP68

Temperature Range: -60°C to 110°C

Material: Impact, Corrosion and UV Resistant Glass Reinforced Polyester

Colour: Grey



Code	Reference Size	(A)	(B)	(C)	(D)	(E)	(F)
0650-0	0 - M20s	M20 x 1.5	52.0	71.0	79.0	65.0	100.0
065001	1 - M20	M20 x 1.5	58.0	88.0	92.0	80.0	118.0
065002	2 - M25	M25 x 1.5	67.0	108.0	107.0	98.0	140.0
065003	3 - M32	M32 x 1.5	105.0	166.0	167.0	150.0	206.0
065004*	4 - M40	M20,M25, M32 or M40 x 1.5	139.0	263.0	240.0	246.0	298.0

* 065004 available with M20, M25, M32 or M40 Entries

Handifit Y Box

Through box assembly. IP66/67/68 weatherproof suitable for indoor / outdoor use, above and below ground. Ideal for industrial applications, outdoor lighting etc. Designed to join two steel wire armoured cables.

Code	Reference Size	(A)	(B)	(C)	(D)	(E)	(F)
0651-0	0 - M20s	M20 x 1.5	52.0	60.0	108.0	62.0	100.0
065101	1 - M20	M20 x 1.5	58.0	75.0	132.0	77.0	116.0
065102	2 - M25	M25 x 1.5	67.0	94.0	148.0	95.0	140.0
065103	3 - M32	M32 x 1.5	105.0	150.0	237.0	152.0	205.0

Handifit Box Locking Keys

Anti-tamper locking keys.

Code	Reference Size	Box Code	Box Code
DIPS0	0 - M20s	0650-0	0651-0
DIPS1	1 - M20	065001	065101
DIPS2	2 - M25	065002	065102
DIPS3	3 - M32	065003	065103

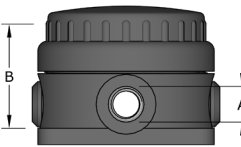
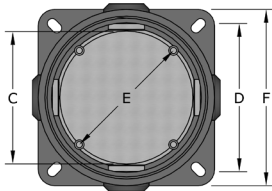
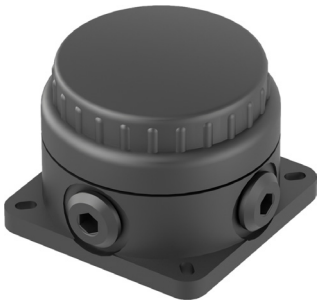


POSIFIT ATEX JUNCTION BOX

Posifit Box

EExe 4 Way Junction Box

The POSIFIT EExe 4-Way / Y Boxes are supplied for use in increased safety areas. They are manufactured from impact, corrosion and UV resistant glass reinforced polyester compound, and provides 1,2,3 or 4 way versatility. Screw on lid provides ease of installation and when locked with locking key prevents unauthorised tampering. POSIFIT range of enclosures are ATEX & IEXe certified Ex eb I, Ex eb IIC, Ex ec IIC , EX tb IIC.



Posifit Box

- No exposed metal parts
- Dust and water proof to IP68 when used with approved CCG glands
- One box offers 1, 2, 3 or 4 way versatility for reduced stock holding
- No drilling or tapping of cable entries required
- Mounting studs provided for DIN rail terminals
- Internal earth continuity ring to earth gland entries
- High temperature resistance, corrosion resistance & anti-static properties
- Only approved CCG cables glands and Ex e terminals must be used

Protection: IP66 / IP68

Ambient Temperature Range: -60°C to 55°C (Finished)

Service Temperature Range: -60°C to 110°C (Unfinished)

Material: Impact, Corrosion and UV Resistant Glass Reinforced Polyester

Colour: Black

Equipment Protection:

ATEX/UKEX: (Finished) Ⓔ I M2, Ⓔ II 2GD / 3G Ex eb I Mb / Ex eb IIC T6 Gb / Ex tb IIIC T70°C Db

ATEX/UKEX: (Unfinished) Ⓔ I M2, Ⓔ II 2GD / 3G Ex eb I Mb / Ex eb IIC Gb / Ex ec IIC Gc / Ex tb IIIC Db



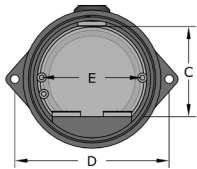
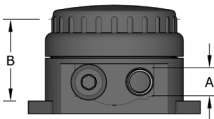
Code	Reference Size	(A)	(B)	(C)	(D)	(E)	(F)
1003-0	0 - M20s	M20 x 1.5	52.0	71.0	79.0	65.0	100.0
100301	1 - M20	M20 x 1.5	58.0	92.0	92.0	80.0	118.0
100302	2 - M25	M25 x 1.5	67.0	108.0	107.0	98.0	140.0
100303	3 - M32	M32 x 1.5	105.0	166.0	167.0	150.0	203.0
100304*	4 - M40	M20,M25, M32 or M40 x 1.5	139.0	225.0	240.0	246.0	298.0

*100304 available with M20, M25, M32 or M40 Entries



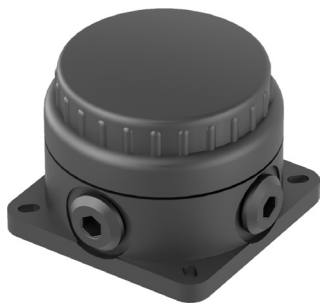
Posifit Box - Y Box

Through box assembly. IP66/67/68 weatherproof suitable for indoor / outdoor use, above and below ground. Ideal for industrial applications, outdoor lighting etc. Designed to join two steel wire armoured cables.



Code	Reference Size	(A)	(B)	(C)	(D)	(E)
1009-0	0 - M20s	M20 x 1.5	52.0	60.0	108.0	62.0
100901	1 - M20	M20 x 1.5	58.0	75.0	132.0	77.0
100902	2 - M25	M25 x 1.5	67.0	94.0	148.0	95.0
100903	3 - M32	M32 x 1.5	105.0	150.0	237.0	152.0

PRE-ASSEMBLED POSIFIT ATEX JUNCTION BOX



Posifit Box

Pre-assembled 4 Way Ex Enclosure

The same features and benefits of the POSIFIT 4 Way range supplied pre-assembled in three sizes and terminal configurations to meet our customers' EX requirements.

POSIFIT range of enclosures are ATEX & IEXEx certified Ex eb I, Ex eb IIC, Ex ec IIC, EX tb IIC.



Code	Reference Size	Entry Thread	Terminal	Earth Terminal
1003-0-P	0 - M20s	M20 x 1.5	6 x 2.5-4.0mm ²	1 x 4.0mm ²
100301-P	1 - M20	M20 x 1.5	6 x 2.5-4.0mm ²	2 x 4.0mm ²
100302-P	2 - M25	M25 x 1.5	8 x 2.5-4.0mm ²	1 x 4.0mm ²



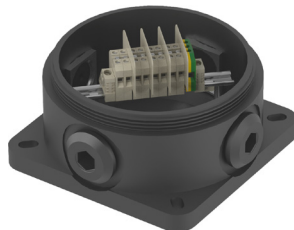
1003-0-P

- 4 x M20 cable entries
- 6 x 2.5-4.0mm² terminals linked in pairs
- 1 x 4.0mm² earth terminal
- Earth continuity ring
- 4 x blanking plugs



100301-P

- 4 x M20 cable entries
- 6 x 2.5-4.0mm² terminals linked in pairs
- 2 x 4.0mm² earth terminal
- Earth continuity ring
- 4 x blanking plugs



100302-P

- 4 x M25 cable entries
- 8 x 2.5-4.0mm² terminals linked in pairs
- 1 x 4.0mm² earth terminal
- Earth continuity ring
- 4 x blanking plugs

Posifit Box Locking Keys

Anti-tamper locking keys.



Code	Reference Size	Box Code	Box Code
DIPS0	0 - M20s	1003-0	1009-0
DIPS1	1 - M20	100301	100901
DIPS2	2 - M25	100302	100902
DIPS3	3 - M32	100303	100903



 Call the Remora sales team at **01226 352 000**

Challenge us - We find a solution

PRE-ASSEMBLED ATEX ENCLOSURE

GRP ATEX Enclosure

Pre-assemble GRP Enclosure

The Remora GRP-EX range of enclosures are available pre-assembled and are readily available from stock. The GRP-EX enclosures are ideal for uses such as lighting, power and instrument junction boxes. Each enclosure comes pre-drilled with M20 tapped cable entries and is supplied with certified blanking plugs. GRP-EX range of enclosures are Ex e, Ex ia and Ex ib requirements to EN 60079:2007.



ATEX Pre-assembled Enclosure

- Pre-drilled M20 tapped cable gland entries supplied with blanking plugs
- No drilling or tapping of cable entries required
- Equipped with DIN rail mounted terminals as shown in below specification table
- Equipped with earth continuity plate and M6 internal/external earth stud
- Dust and water proof to IP66 and IP67

Protection: IP66 / IP67

Ambient Temperature Range: -20°C to 40°C at T6

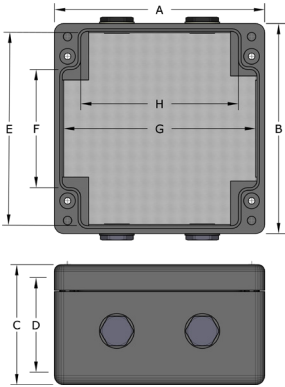
-20°C to 55°C at T5

-55°C to 65°C (available with SiliconeSeal)

Material: Carbon Loaded Glass Reinforced Polyester GRP

Colour: Black

Standards: ATEX & IECEx (Zone 1 & 2 Zone 21 & 22)

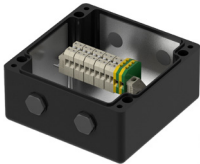


Code	(A)	(B)	(C)	(D)	(E)	(F)	(G)	(H)
GRP807555-P	80.0	75.0	55.0	46.0	66.0	27.0	71.0	56.0
GRP12212090-P	122.0	120.0	90.0	81.5	111.0	66.0	113.0	90.0
GRP16016090-P	160.0	160.0	90.0	80.0	148.0	90.0	148.0	120.0
GRP26016090-P	260.0	160.0	90.0	80.0	148.0	90.0	90.0	220.0



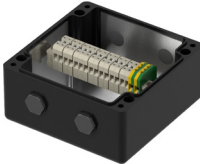
GRP807555-P

- 2 x M20 cable entries
- 5 x 2.5mm² terminals
- 1 x 4.0mm² earth terminal
- Earth continuity plate
- M6 earth stud
- 2 x blanking plugs
- ATEX certification label



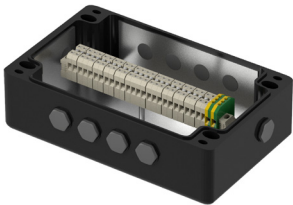
GRP12212090-P

- 4 x M20 cable entries
- 10 x 2.5mm² terminals
- 2 x 4.0mm² earth terminal
- Earth continuity plate
- M6 earth stud
- 4 x blanking plugs
- ATEX certification label



GRP16016090-P

- 4 x M20 cable entries
- 15 x 2.5mm² terminals
- 2 x 4.0mm² earth terminal
- Earth continuity plate
- M6 earth stud
- 4 x blanking plugs
- ATEX certification label



GRP26016090-P

- 10 x M20 cable entries
- 26 x 2.5mm² terminals
- 2 x 4.0mm² earth terminal
- Earth continuity plate
- M6 earth stud
- 10 x blanking plugs
- ATEX certification label

ATEX ENCLOSURES | Junction Boxes & Enclosures

ENCLOSURE ACCESSORIES

DIN Rails

DIN Rails are designed in accordance with the European Standard DIN EN 60715. Manufactured to a high degree of dimensional accuracy and restricted tolerances. DIN Rails are available in standard lengths of 2M with or without perforation.

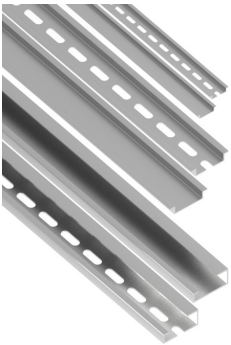
Material: Galvanised Steel, Chromium Plated

Colour: Silver

Standards: DIN EN 60715



Code	Type	Width	Height	Thickness	Length (m)
TS32	Solid	32.0	15.0	1.5	2
TS32-1	Slotted	32.0	15.0	1.5	2
TS35	Solid	35.0	7.5	1.0	2
TS35-1	Slotted	35.0	7.5	1.0	2



Ident & Wiring term

Copper Lugs

Heatshrink Repair

Cable Joining

Junction Boxes

Flexible Conduit

Cable Glands

Gland Accs.

Cable Cleats

Earthing Lightning

MCC Cable

Cable Ties & Acc

Tooling & Cable Prep

Fixing & Security