

## WHAT'S NEW IN... LOCKNUTS

# Locknuts

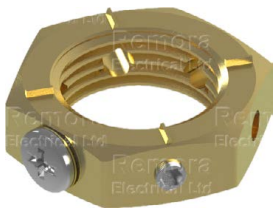
Locknuts are used for securing cable glands in position, and are used on the cable gland entry thread. They ensure that the cable gland doesn't come loose, which is highly desired due to the power that could be flowing through them at any one time. Remora locknuts go a long way towards keeping everything together, even in areas where stress on the cable gland is more frequent. Used in conjunction with our earth tags and washers, these locknuts form the most secure cable gland set-up one could hope for. Available in a wide range of materials, sizes and threads.

### Design

- Precision manufactured from extrusion stock.
- Metric, PG, NPT, BSP and ET threads.
- Fast and easy installation.
- Excellent chemical resistance with nickel plating.
- High-temperature and strength options.

### Material Selection

- **Brass** - Recommended for securing brass Cable Glands and Accessories to a gland plate or into equipment. High dimensional stability, even under the effect of increased temperature. Also available in Nickel Plated corrosion resistant finish.
- **Aluminium** - Recommended when installing aluminium Cable Glands to prevent the galvanic corrosion which can occur when dissimilar metals are coupled together.
- **Stainless Steel** - Corrosion resistant with increased strength at high temperatures.
- **Nylon** - Recommended for securing nylon Cable Glands and Accessories.



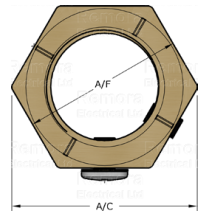
### Earthing Locknuts

Earth Nuts are designed to speed up the installation of cable glands by replacing the earth tag and lock nut to provide a high integrity earth connection.

**Temperature Range:** -60°C to 200°C

**Material:** Brass BS 2874 CZ121 Pb3

**Finish:** Plain Brass



Code	Entry Thread	A/F	A/C
UBEN1	M20 x 1.5	27.0	31.0
UBEN2	M25 x 1.5	35.0	40.0
UBEN3	M32 x 1.5	45.0	51.0