

Three Sizes M20, M25 & M32

16mm² and 25mm² Tails in a
compact M32 Gland

GripLoc®

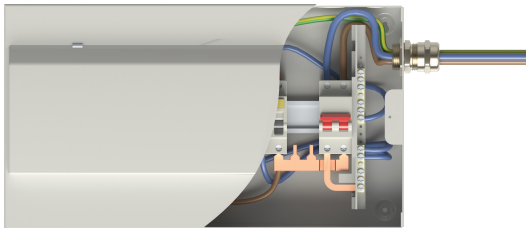
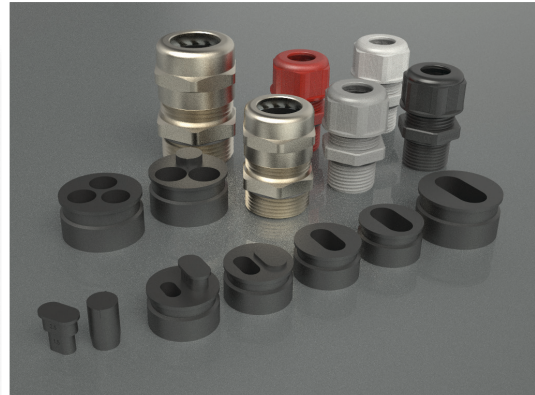
Consumer Unit Kits

Multi-Hole Seals

Flat Form and Tail Kits

Remora is now able to offer a complete solution to address the new regulations included in Amendment 3. Specially designed to fit in compact M20, M25 and M32 glands ensuring maximum compatibility with new Metal Enclosure consumer units.

Kits are available in both Metal (Nickel Plated Brass) and Plastic (Nylon 66). Inserts can be supplied for multiple configurations ranging from 1.0mm² to 16mm² Flat cable and 16mm² to 25mm² Tails.



Enhanced Fire Safety for Consumer Units

Offering compliance with Amendment 3 to
the BS 7671:2008 IET Wiring Regulations.

GripLoc® Consumer Unit Glands

For more information on these and other Remora
products, please visit our website at www.remora.net



By Remora Electrical



Enhanced Fire Safety from Consumer Units **Technical Bulletin**

Over the course of 2015 and 2016 the electricity industry faces changes to the regulations governing selection and installation practices concerning domestic Consumer Units. Amendment 3 to the 17th Edition of the IET Wiring Regulations calls for enhanced fire risk protection in these devices. Regulation 421.1.201 in particular is expected to address the selection of Consumer Units. These new regulations will apply to all electrical installations designed after 1st July 2015 and will come into full effect as of 1st January 2016.

“Within domestic premises, consumer units and similar switchgear assemblies shall comply with BS EN 61439-3 and shall:

***I. Have their enclosures manufactured from non-combustible material
or***

II. Be enclosed in a cabinet or enclosure constructed of non-combustible material complying with regulation 132.12.

The intent of regulation 421.1.201 is considered to be, as far as reasonably practicable, to contain any fire within the enclosure and to minimise flames from escaping. The following FAQs cover the key points:

Defining “non-combustible”?

There is no published definition for “non-combustible” that aligns with the intent of regulation 421.1.201. Ferrous metal, e.g. steel, is deemed to be one example of a non-combustible material that meets the intent of the regulation.

What constitutes a “non-combustible” enclosure?

A non-combustible enclosure includes base, cover, door and any attached components e.g. hinges, covers, screws, sealing glands, necessary to maintain fire containment.

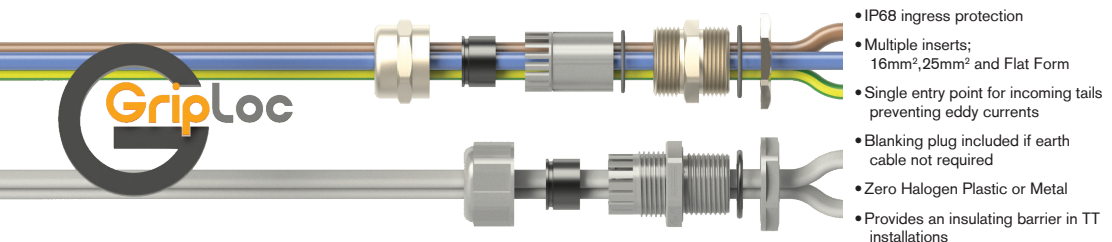
How is account taken of cable entries into a “non-combustible” enclosure with respect to containment of fire and escape of flames?

Good workmanship and proper materials must be applied by the installer. The cable entry method shall, as far as reasonably practicable, maintain the fire containment of the enclosure.

GripLoc[®] **Consumer Unit Kits**

Remora is now able to offer a complete solution to address the new regulations included in Amendment 3.

Special multi-hole seals have been designed to suit our GripLoc[®] Kits and are available in both Metal (Nickel Plated Brass) and Plastic (Nylon 66). Inserts can be supplied for multiple configurations ranging from 1.5mm² to 16mm² Flat cable and 16mm² to 25mm² Tails. Certified to IP68 ingress protection. Specially designed to fit in compact M20, M25 and M32 glands ensuring maximum compatibility with new Metal Enclosure consumer units.



Consumer Unit Tail Kits

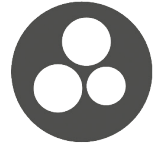
- IP68 ingress protection
- Multiple inserts;
- 16mm² and 25mm² Tails
- Single entry point for incoming tails preventing eddy currents
- Blanking plug included if earth cable not required
- Zero Halogen Plastic or Metal
- Provides an insulating barrier in TT installations.

Material: PA66 (Nylon) or Nickel Plated Brass BS 2874 CZ121 Pb3

Colour: Nickel Plated or Black, Grey, Red, White



Code	Code	Insert Configuration	Entry Thread
(Brass)	(Nylon)		
MTK3/16B	MTK3/16N	2x 16mm ² + 1x 10mm ²	M32 x 1.5
MTK3/25B	MTK3/25N	2x 25mm ² + 1x 16mm ²	M32 x 1.5



• MTK3/16 (M32)



• MTK3/25 (M32)



• FFK2/1.5 (M20)



• FFK1/2.5 (M20)



• FFK2/2.5 (M25)



• FFK1/4.0 (M25)



• FFK1/6.0 (M25)



• FFK1/10.0 (M25)



• FFK1/16.0 (M32)

Consumer Unit Flat Form Kits

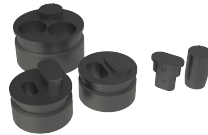
- IP68 ingress protection
- Multiple inserts;
- 1.0mm² to 16mm² Flat Form
- Zero Halogen Plastic or Metal

Material: PA66 (Nylon) or Nickel Plated Brass BS 2874 CZ121 Pb3

Colour: Nickel Plated or Black, Grey, Red, White



Code	Code	Insert Configuration	Entry Thread
(Brass)	(Nylon)		
FFK2/1.5B	FFK2/1.5N	2x 1.0-1.5mm ² Flat Form	M20 x 1.5
FFK1/2.5B	FFK1/2.5N	1x 2.5-4.0mm ² Flat Form	M20 x 1.5
FFK2/2.5B	FFK2/2.5N	2x 2.5-4.0mm ² Flat Form	M25 x 1.5
FFK1/4.0B	FFK1/4.0N	1x 4.0mm ² Flat Form	M25 x 1.5
FFK1/6.0B	FFK1/6.0N	1x 6mm ² Flat Form	M25 x 1.5
FFK1/10.0B	FFK1/10.0N	1x 10mm ² Flat Form	M25 x 1.5
FFK1/16.0B	FFK1/16.0N	1x 16mm ² Flat Form	M32 x 1.5



Blanking plug included for single cable and Tail Kit installations.

Remora Flat Form and Tail Kits are supplied complete with:



Metal or Plastic Cable Gland

Multi-Tail or Flat Form Insert



Blanking Plug



Metal or Plastic Locknut



Call the Remora sales team at **01226 352 000**

Challenge us - We find a solution

FLAT FORM AND TAIL KITS | Cable Glands

CONTRACTOR BOXES

Consumer Unit Contractor Box - Brass

Full Contractor Kit, with a selection of common size glands and extra seals to suit.

Ensure you're equipped for every eventuality.

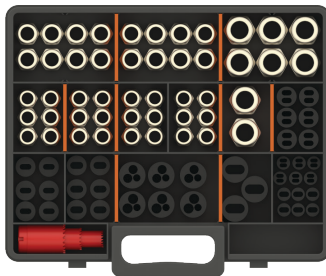
- Glands; 8x M32, 16x M25, 24x M20
- Seals; 15x M32, 34x M25, 35x M20
- Optional high quality Morse Master Cobalt hole saws and arbors (M20, M25, M32)

Material: Nickel Plated Brass BS 2874 CZ121 Pb3

Finish: Nickel Plated



Code	Description
CUB-BRASS	Brass Consumer Unit Contractor Box
CUB-BRASS+	Brass Consumer Unit Contractor Box (+ Hole saws)



Consumer Unit Contractor Box - Nylon

Full Contractor Kit, with a selection of common size glands and extra seals to suit.

Ensure you're equipped for every eventuality.

- Glands; 6x M32, 12x M25, 18x M20
- Seals; 12x M32, 20x M25, 20x M20
- Optional high quality Morse Master Cobalt hole saws and arbors (M20, M25, M32)

Material: PA66 (Nylon)

Colour: Grey



Code	Insert Configuration
CUB-NYLON	Nylon Consumer Unit Contractor Box
CUB-NYLON+	Nylon Consumer Unit Contractor Box (+ Hole saws)

