

# Fixing & Security

## Fixing & Security

An electrical installation is only as strong as its support systems and mechanical protection. It's not only important to have reliable power, but determining how that power is distributed and protected – whether in commercial or industrial application.

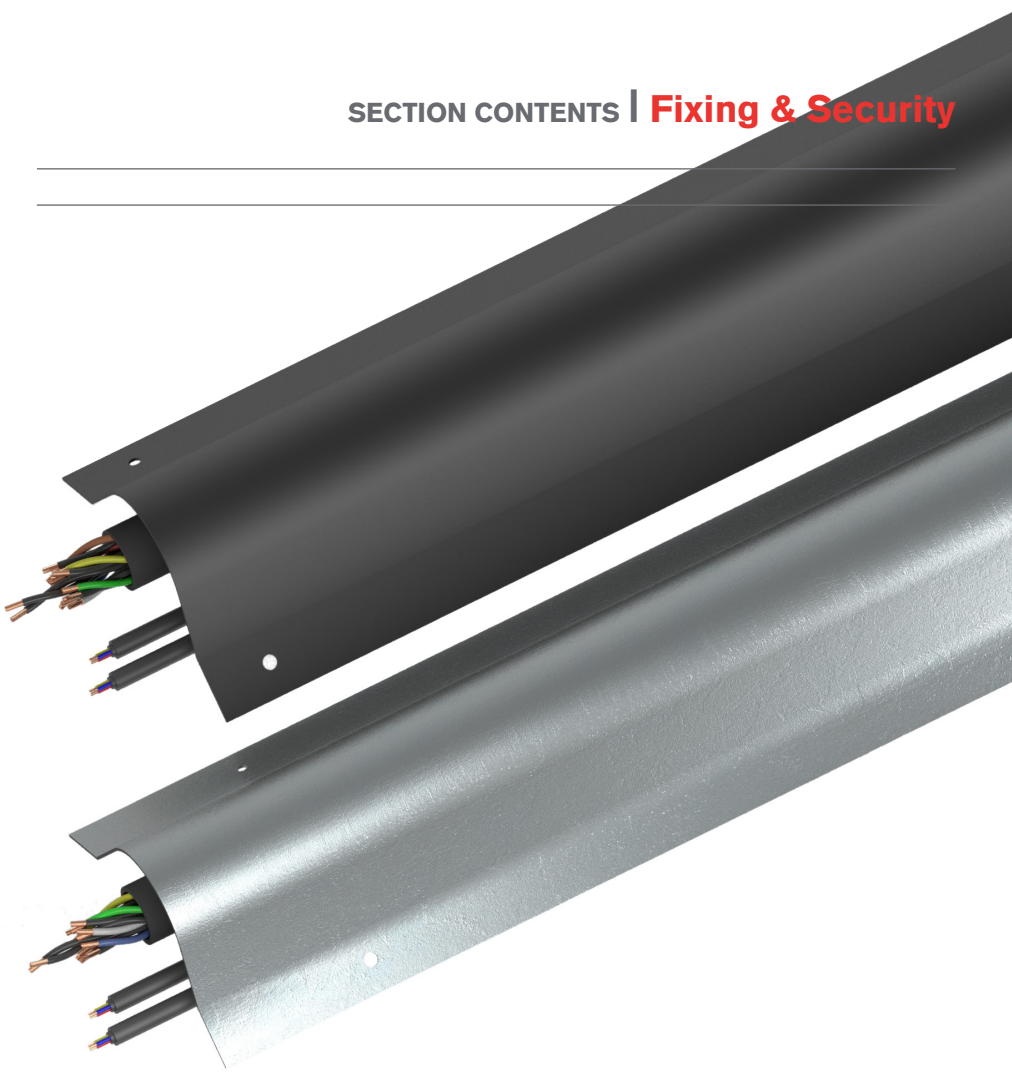


**Anti Vandal Guard:** Anti vandal Guarding is available in galvanised steel or HDPE plastic. All you need to tell us is the diameter of the cable or pipe to be protected, 25, 38 or 80mm, a neat package which will protect against accidental damage or deliberate acts of vandalism.

**Catenary Wires Systems:** Our catenary wire, manufactured in accordance to BS 302-1:1987 from galvanised mild steel is available in 2 lengths and 3 sizes in bare and PVC coated. Also available are accessories such as grips, hook plates, wire eyes and tensioners.

**Girder Clips:** E-Klips™ is the market leading spring fastener brand, universally accepted with products manufactured from spring steel in accordance to BS 1449 Part 2 grade CS70 other products included rolled, forged and plastic components.

**Hole Saw Cutting:** Elevate your cutting experience with Starrett Hole Saws, the epitome of precision and durability. Engineered for excellence, these saws from Starrett promise unparalleled performance across various materials. Transform your cutting experience – choose Starrett Hole Saws for unmatched performance.



Anti-Vandal Guard	P. 284   285
Catenary Wire Systems	P. 286   287
Girder Fixing Systems	P. 288   293
Hole Saws	P. 294   297



Ident & Wiring term
Copper Lugs
Heatshrink Repair
Cable Joining
Junction Boxes
Flexible Conduit
Cable Glands
Gland Accs.
Cable Cleats
Earthing Lightning
MCC Cable
Cable Ties & Acc
Tooling & Cable Prep
<b>Fixing &amp; Security</b>

# Anti-Vandal Guard

## Galvanised Steel / HDPE Plastic

Anti-Vandal Guard is available manufactured from Steel or HDPE plastic. Designed for use with cables, pipes or tape where protection is required from accidental damage or vandalism. Designed to be installed on any flat or curved surface including; walls, fences and telegraph poles.

### Non-Metallic

- Protection of vertical/horizontal cable runs on wooden poles, fences and walls
- Manufactured from HDPE which provides an excellent balance of rigidity and high impact strength
- Supplied with screw fixing holes for easy installation
- Can also be used to protect other utility supplies on walls i.e. gas, oil, water
- Lightweight and easily transported
- With UV and flame retardant additives.

### Metallic

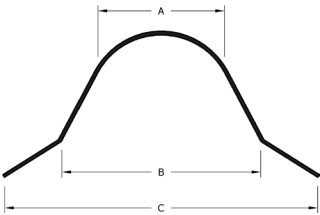
- Protection of vertical/horizontal cable runs on wooden poles, fences and walls
- Manufactured from galvanised steel providing an increased level of security and strength
- Galvanised finish provides excellent corrosion resistance for installations exposed to the elements
- Supplied with screw fixing holes for easy installation

ANTI-VANDAL GUARD

Anti-Vandal Guard - Non-Metallic

- Non-Metallic anti-vandal guard is designed as a cost effective option manufactured from HDPE plastic. Designed for use with cables and pipes where protection is required from accidental damage, vandalism or theft. Designed to be installed on walls, fences and telegraph poles
- Due to product length and construction Anti-Vandal Guard may incur extra freight

**Material:** HDPE plastic  
**Colour:** Black

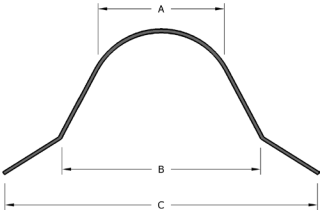


Code	Colour	Material	Max Diameter to Protect	Dimensions				
				Length (m)	Height	(A)	(B)	(C)
AVHD25	Black	HDPE	25	3	38	25	25	60
AVHD38	Black	HDPE	40	3	48	38	82	38
AVHD80	Black	HDPE	80	3	90	80	105	140

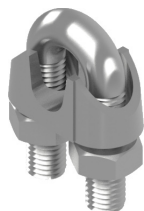
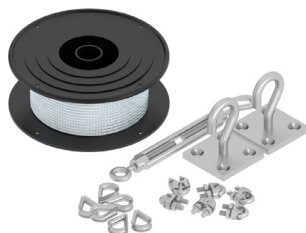
Anti-Vandal Guard - Metallic

- Metallic anti-vandal guard is manufactured from Galvanised Steel. Designed for use with cables and pipes where protection is required from accidental damage, vandalism or theft. Designed to be installed on walls, fences and telegraph poles
- Due to product length and construction Anti-Vandal Guard may incur extra freight

**Material:** Galvanised Steel  
**Colour:** Silver Grey



Code	Material	Max Diameter to Protect	Dimensions					
			Length (m)	Height	(A)	(B)	(C)	
AVHD25-GALV	Galvanised Steel	25	2.5	41	35	60	100	
AVHD38-GALV	Galvanised Steel	38	2.5	61	75	110	150	
AVHD75-GALV	Galvanised Steel	75	2.5	92	95	160	200	



### Catenary Wire Eyelets

Wire Rope Eyelets offer protection to your wire rope and form a steel loop for securing.

**Material:** Dipped Galvanised Steel



Code	Wire Size	Pack QTY
WT-23	2.0 to 3.0	20
WT-4	4.0	20
WT-6	6.0	20

### Catenary Wire Tensioners

Catenary wire tensioners are used to tension the wire which minimises unwanted movement.

**Material:** Dipped Galvanised Steel



Code	Wire Size	Pack QTY
CWT-23	2.0 to 3.0	2
CWT-46	4.0 to 6.0	2

### Wall Hook Plates

Hook Plates are designed for anchoring catenary wire into timber or other solid materials.

**Material:** Dipped Galvanised Steel



Code	Plate Dimensions	Hook Projection	Pack QTY
HW-50	50 x 50 x 5	65.0	2

### Catenary Wire Eye Bolts

Eye Bolts are designed for anchoring catenary wire into timber or other solid materials.

**Material:** Dipped Galvanised Steel



Code	Thread Size	Thread length	Overall Length	Pack QTY
M8EB	M8	50.0	93.0	10
M10EB	M10	50.0	93.0	10

### Catenary Wire Leather Suspenders

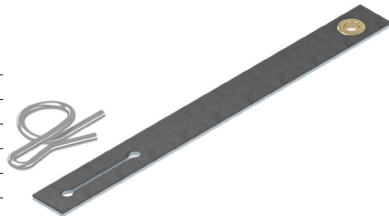
Cable Suspenders are manufactured in leather with a hot dipped galvanised mild steel hook and brass eyelet. Used to support cables on catenary wire system.

**Standards:** BS EN ISO 1461

**Material:** Dipped Galvanised Steel / Leather Strap



Code	Dimensions		Hook	Max Load (Kg)	Max. Cable	
	Length	Width			Diameter	Pack QTY
CS6	152.0	19.0	Single	22.0	32.0	10
CS7	178.0	19.0	Single	22.0	38.0	10
CS8	203.0	19.0	Single	23.0	48.0	10
CS9	228.0	25.4	Single	27.0	54.0	10
CS10	254.0	25.4	Single	28.0	60.0	10
CS12	305.0	50.8	Double	64.0	72.0	10





# Girder Clips



## E-Klips

E-Klips™ is the market leading spring fastener brand, universally accepted with products manufactured from spring steel in accordance to BS 1449 Part 2 grade CS70 other products included rolled, forged and plastic components. Most components within this system are interchangeable and can be used in combination with each other.

### Applications

The E-Klips™ spring steel fasteners range provides a fixing for almost every application, including:

- Cables
- Trunking
- Cable tray
- Conduit
- Pipework
- Ducting
- Lighting
- Suspended ceilings

### Ultimate Corrosion Protection

E-Klips™ spring steel fasteners are now protected with our revolutionary Z600+ coating. This unique two-stage protective coating ensures that E-Klips fasteners remain protected from corrosion for a considerable period of time. Z600+ is an environmentally-friendly product which meets the requirement for a low solvent content material.

### Reduced installation Time

E-Klips™ spring steel fasteners have been developed to reduce installation time. They are easy to install using only a hammer, screwdriver, spanner or pliers.

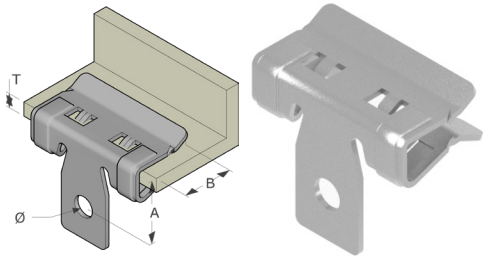
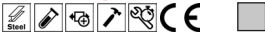
### FMRC Approval

FMRC approval indicates that the product has been tested and approved by the Factory Mutual Research Corporation (FMRC) for use in buildings where fire regulations and environmental concerns would apply.

**CORROSION**  
**Z600+**  
**PROTECTION**

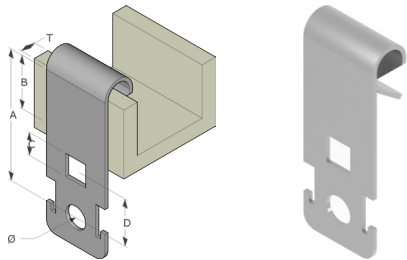
GIRDER CLIPS

**Girder Clips for Chain or Wire**



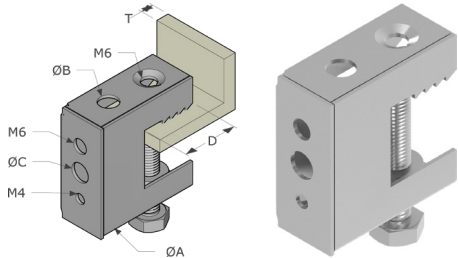
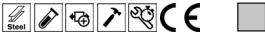
Code	(T)	Ø	(A)	(B)	Load Rating Kg	Material Finish	Box QTY
AH-153	1.5 - 3.0	6.5	16.0	12.5	72.0	F8+	100
AH-38	3.0 - 8.0	6.5	18.0	20.3	90.0	F8+	100
AH-814	8.0 - 14.0	6.5	26.0	20.3	90.0	F8+	100
AH-1420	14.0 - 20.0	6.5	30.0	26.6	90.0	F8+	100

**Purlin Clips for Chain or Wire**



Code	(T)	Ø	(A)	(B)	(C)	(D)	Load Rating Kg	Material Finish	Box QTY
AV-155	1.5 - 4.0	6.5	41.0	14.0	6.5	12.0	72.0	F8+	100
AV-57	4.5 - 7.0	6.5	42.0	15.0	6.5	12.0	72.0	F8+	100

**Girder Clamps for Threaded Rod**

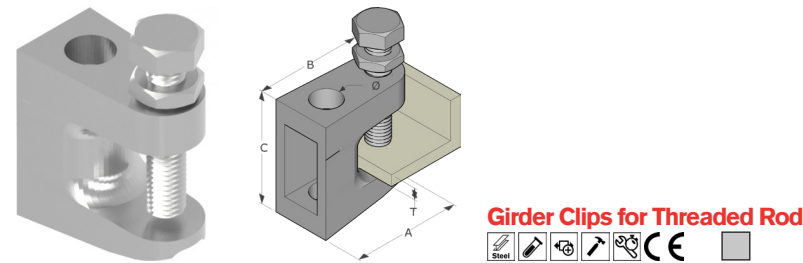


Code	(T)	Ø (A)	Ø (B)	Ø (C)	(D)	Load Rating Kg	Material Finish	Box QTY
FH-65	Max 18	12.7	6.5	6.5	19.5	45.0	F8+	100
FH-107	Max 18	10.7	10.7	6.5	19.5	45.0	F8+	100

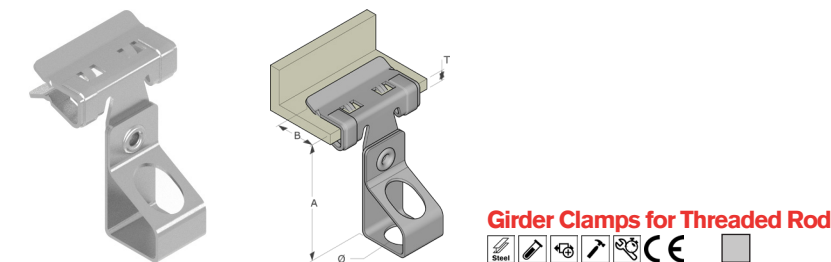


Fixing & Security | GIRDER FIXING SYSTEMS

GIRDER CLIPS



Code	(T)	Ø	(A)	(B)	(C)	Load	Material	Box QTY
						Rating Kg	Finish	
FC-7	Max 19	7.0	50.0	42.0	45.0	120.0	F1	25
FC-9	Max 19	9.0	50.0	42.0	45.0	120.0	F1	25
FC-11	Max 19	11.0	50.0	42.0	45.0	250.0	F1	25
FC-13	Max 23	13.0	59.0	49.0	54.0	350.0	F1	25
FC-6T	Max 19	M6	50.0	42.0	45.0	120.0	F1	25
FC-8T	Max 19	M8	50.0	42.0	45.0	120.0	F1	25
FC-10T	Max 19	M10	50.0	42.0	45.0	250.0	F1	25
FC-12T	Max 23	M12	59.0	49.0	54.0	350.0	F1	25

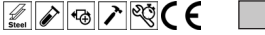


Code	(T)	Ø	(A)	(B)	Load	Material	Box QTY
					Rating Kg	Finish	
AH153-AM127	1.5 - 3.0	12.7	44.0	12.5	68.0	F8+	25
AH38-AM127	3.0 - 8.0	12.7	46.0	20.3	68.0	F8+	25
AH814-AM127	8.0 - 14.0	12.7	54.0	20.3	68.0	F8+	25
AH1420-AM127	14.0 - 20.0	12.7	66.0	26.6	68.0	F8+	25
AH153-AM6T	1.5 - 3.0	M6	44.0	12.5	68.0	F8+	25
AH38-AM6T	3.0 - 8.0	M6	46.0	20.3	68.0	F8+	25
AH814-AM6T	8.0 - 14.0	M6	54.0	20.3	68.0	F8+	25
AH1420-AM6T	14.0 - 20.0	M6	66.0	26.6	68.0	F8+	25
AH153-AM8T	1.5 - 3.0	M8	44.0	12.5	68.0	F8+	25
AH38-AM8T	3.0 - 8.0	M8	46.0	20.3	68.0	F8+	25
AH814-AM8T	8.0 - 14.0	M8	54.0	20.3	68.0	F8+	25
AH1420-AM8T	14.0 - 20.0	M8	66.0	26.6	68.0	F8+	25
AH153-AM10T	1.5 - 3.0	M10	44.0	12.5	68.0	F8+	25
AH38-AM10T	3.0 - 8.0	M10	46.0	20.3	68.0	F8+	25
AH814-AM10T	8.0 - 14.0	M10	54.0	20.3	68.0	F8+	25
AH1420-AM10T	14.0 - 20.0	M10	66.0	26.6	68.0	F8+	25

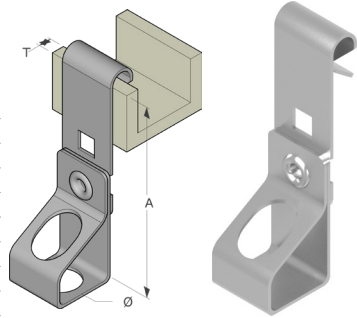
All dimensions in mm except where stated

## PURLIN CLIPS

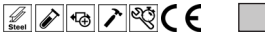
### Purlin Clips for Threaded Rod



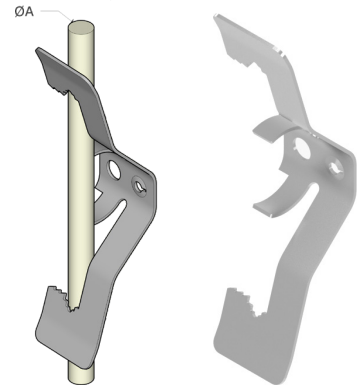
Code	(T)	Ø	(A)	Load	Material	Box QTY
				Rating Kg	Finish	
AV155-AM127	1.5 - 4.0	12.7	70.0	68.0	F8+	25
AV155-AM6T	1.5 - 4.0	M6	70.0	68.0	F8+	25
AV155-AM8T	1.5 - 4.0	M8	70.0	68.0	F8+	25
AV155-AM10T	1.5 - 4.0	M10	70.0	68.0	F8+	25
AV57-AM127	4.5 - 7.0	12.7	70.0	68.0	F8+	25
AV57-AM6T	4.5 - 7.0	M6	70.0	68.0	F8+	25
AV57-AM8T	4.5 - 7.0	M8	70.0	68.0	F8+	25
AV57-AM10T	4.5 - 7.0	M10	70.0	68.0	F8+	25



### Fastening Clips for Threaded Rod



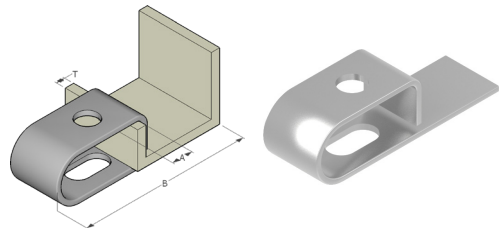
Code	Ø (A)	Fixing Size	Load	Material	Box QTY
			Rating Kg	Finish	
FM-313T	M6 / M8 / M10	M4 / 6.5	10	F8+	100
FM-320T	M6 / M8 / M10	M4 / 6.5	10	F8+	100



### Purlin Clamp for Threaded Rod



Code	(T)	Ø	(A)	(B)	Load	Material	Box QTY
					Rating Kg	Finish	
PD	≤ 4	12.0	15.0	85.0	40.0	F2	50



## GIRDER CLIPS

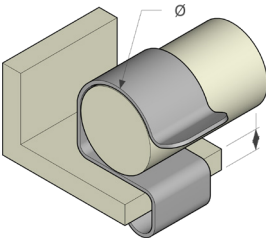
Ident & Wing Term  
Copper Lugs  
Heatshrink Repair  
Cable Joining  
Junction Boxes  
Flexible Conduit  
Cable Glands  
Gland Acas.  
Cable Cleats  
Earthing & Lightning  
MCC Cable  
Cable Ties & Acc  
Tooling & Cable Prep  
Fixing & Security



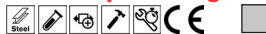
### Girder Clips for Single Cable



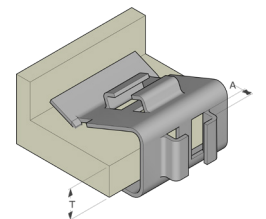
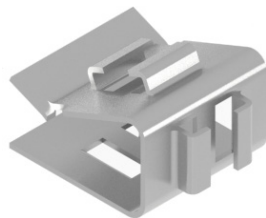
Code	(T)	Ø	Material	Box QTY
			Finish	
ECS-4555	2.0 - 4.0	4.5 - 5.5	F8+	100
ECS-67	2.0 - 4.0	6 - 7	F8+	100
ECS-89	2.0 - 4.0	8 - 9	F8+	100
ECS-1011	2.0 - 4.0	10 - 11	F8+	100
ECS-1214	2.0 - 4.0	12 - 14	F8+	100
ECS-1519	2.0 - 4.0	15 - 18	F8+	100
ECS-2024	2.0 - 4.0	19 - 24	F8+	100
ECS-2532	2.0 - 4.0	25 - 32	F8+	100
ECM-4555	4.0 - 7.0	4.5 - 5.5	F8+	100
ECM-67	4.0 - 7.0	6 - 7	F8+	100
ECM-89	4.0 - 7.0	8 - 9	F8+	100
ECM-1011	4.0 - 7.0	10 - 11	F8+	100
ECM-1214	4.0 - 7.0	12 - 14	F8+	100
ECM-1519	4.0 - 7.0	15 - 18	F8+	100
ECM-2024	4.0 - 7.0	19 - 24	F8+	100
ECM-2532	4.0 - 7.0	25 - 32	F8+	100
ECL-4555	8.0 - 12.0	4.5 - 5.5	F8+	100
ECL-67	8.0 - 12.0	6 - 7	F8+	100
ECL-89	8.0 - 12.0	8 - 9	F8+	100
ECL-1011	8.0 - 12.0	10 - 11	F8+	100
ECL-1214	8.0 - 12.0	12 - 14	F8+	100
ECL-1519	8.0 - 12.0	15 - 18	F8+	100
ECL-2024	8.0 - 12.0	19 - 24	F8+	100
ECL-2532	8.0 - 12.0	25 - 32	F8+	100



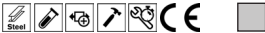
### Girder Clips for Single Cable



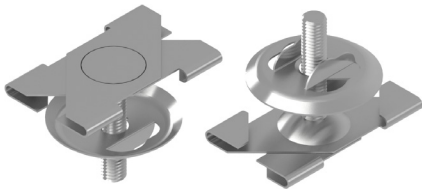
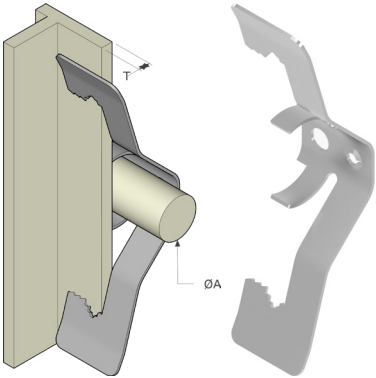
Code	(T)	(A)	Material	Box QTY
			Finish	
ECA-1215	12.0 - 15.0	2.0 - 4.0	F8+	100
ECA-1520	15.0 - 20.0	2.0 - 4.0	F8+	100



**Fastening Clips to conduit**



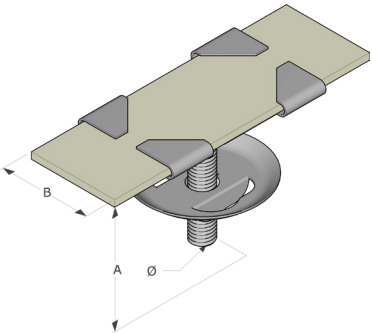
Code	Conduit Size		Load		Material	
	(T)	Ø (A)	Rating Kg	Finish	Box QTY	
FM-313T	3.0 - 5.0	16 - 25	45	F8+	100	
	6.0 - 9.0	16 - 20	45	F8+	100	
	9.0 - 13.0	16	45	F8+	100	
FM-320T	3.0 - 5.0	20 - 38	45	F8+	100	
	6.0 - 9.0	20 - 35	45	F8+	100	
	9.0 - 13.0	20 - 30	45	F8+	100	
	13.0 - 16.0	20 - 25	45	F8+	100	
	16.0 - 20.0	20	45	F8+	100	



**Suspended Ceiling Clips**



Code	Ø	(A)	(B)	Load		Material	
				Rating Kg	Finish	Box QTY	
JHX-16SW (White)	M6	16.0	25.0	9.0	F4	100	
JHX-16S	M6	16.0	25.0	22.0	F8+	100	
JHX-38S	M6	38.0	25.0	22.0	F8+	100	
JH-15SW (White)	M6	15.0	15.0	22.0	F4	100	



# Hole Saw Cutting

For over 130 years, manufacturers, builders, and tradespeople around the world have relied on Starrett Company's quality precision tools and saws to ensure the consistency of their work. They understand that the Starrett name on a saw blade guarantees exceptional quality, innovation, and expert technical support. Starrett line continue to be the most accurate, robust, and durable tools available, thanks to strict quality control, cutting-edge R&D, and an ongoing commitment to producing superior tools.



### Cordless Smooth Cut

This revolutionary hole saw is supplied as a complete assembly with arbour, pilot drill, and ejector spring designed exclusively for cordless power tools. The safety stop at the base prohibits cutting beyond the hole saw depth of 13mm.



### Fast Cut

The FCH - Fast Cut Hole Saw with enhanced heat & wear resistance. Provides a smoother, faster cut on a wide range of materials. Specifically suited to cutting stainless and mild steel sheets, the Fast Cut will also cut through tubes with a wall thickness of up to 3mm. For softer materials a cutting depth of up to 13mm.



### Kits & Accessories

Starrett Hole Saw Kits, you'll find a diverse range of saws, each meticulously selected in size to precisely meet the unique requirements of various trades. Whether you're an electrician, contractor, industrial user, or DIY enthusiast, these kits provide a versatile selection of saws crafted to fulfil a broad spectrum of needs.



### Bi Metal CSC - Cordless Smooth Cut

Complete hole saw assembly with arbour, pilot drill, and ejector spring designed exclusively for cordless power tools. The safety stop at the base prohibits cutting beyond the hole saw depth of 13mm (½ inch). Cuts stainless steel sheeting, tool and mild steel sheeting, wood, trunking, thin plastics, and thin non-metals. Recommended cutting depth: 3mm.

Featuring a heat-resistant high-speed steel edge, with alloy backing and a constant pitch of 8 TPI, it is ideal for cutting stainless and mild sheet steel, plasterboard, wood, and thin non-metals.

- Safety stop at the base of the hole saw prevents saw travel beyond the hole saw depth -13mm
- Core Ejector: Pre fitted spring
- Complete assembly - arbor, pilot drill and ejector spring included
- Constant pitch teeth provide exceptionally smooth cuts. Pitch 8 teeth per 25mm
- Recommended cutting depth 3mm

**Applications:** Stainless Steel Sheeting, Tool & Mild Steel Sheeting, Wood, Trunking, Thin Plastics & Thin Non-Metals

**Material:** High-Speed Steel



Code	Size	inch
CS16	16	5/8"
CS19	19	3/4"
CS20	20	25/32"
CS22	22	7/8"
CS25	25	1"
CS27	27	1.1/16"
CS29	29	1.1/8"
CS30	30	1.3/16"
CS32	32	1.1/4"
CS35	35	1.3/8"
CS38	38	1.1/2"
CS40	40	1.9/16"
CS51	51	2"



	<3mm	<input checked="" type="checkbox"/>
Rec. Cutting Depth	3-13mm	<input type="checkbox"/>
	>13mm	<input type="checkbox"/>
• Metal		★ ★
• Inox (Stainless)		★ ★
• Non Ferrous Materials		★ ★
Wood		★
Veneer		★
Plastic		★
Acrylic		★
Formica		★

### Cordless Smooth Cut Kits

Cordless Smooth Cut Kits are supplied in a durable, rugged carry case with pre-mould dividers. Offered in two convenient kits to cover most applications.

**Applications:** Stainless Steel Sheeting, Tool & Mild Steel Sheeting, Wood, Trunking, Thin Plastics & Thin Non-Metals

**Material:** High-Speed Steel



Code	Description	Hole Saw Size
KCS03001	Electricians Kit	20mm, 25mm & 32mm
KCS06001	General Purpose Kit 1	16mm, 20mm, 22mm, 25mm, 32mm & 40mm



# Fixing & Security | HOLE SAWS

## BI-METAL CUTTING

Ident & Wing Term  
Copper Lugs  
Heatshrink Repair  
Cable Joining  
Junction Boxes  
Flexible Conduit  
Cable Glands  
Acids  
Cable Cleats  
Earthing Lighting  
MCC Cable  
Cable Ties & Acc  
Tooling & Cable Prep  
Fixing & Security



Code	Size	Arbors
FCH0096	14	
FCH0058	16	
FCH1016	17	
FCH0034	19	
FCH2532	20	
FCH2532-6pack	20	A1
FCH1036	21	A4
FCH0078	22	
FCH1056	24	A1-1 (SDS Plus)
FCH0100	25	
FCH0100-6pack	25	
FCH0116	27	
FCH0118	29	
FCH0136	30	
FCH0114	32	
FCH0114-6pack	32	
FCH0156	33	
FCH0138	35	
FCH0176	37	
FCH0112	38	
FCH0196	40	
FCH0158	41	A2
FCH1116	43	A10
FCH0134	44	
FCH1136	46	A2-1 (SDS Plus)
FCH0178	48	
FCH0200	51	
FCH0216	52	
FCH0218	54	
FCH056M	56	
FCH0214	57	
FCH0256	59	

### Bi Metal FCH - Fast Cut Hole Saws

The FCH - Fast Cut Bi-Metal Hole Saws contain an extra cobalt HSS tooth material, and a 5.5 TPI positive rake tooth design ensuring a smoother and faster cut. Although designed for cutting stainless steel, metals, and mild steel sheet, the Fast Cut Saws will cut through wood, plastic, plaster, and other materials. Recommended cutting depth - up to 13mm in softer materials.

Featuring a heat-resistant high-speed steel edge, with alloy backing and a constant pitch of 5.5 TPI, it is ideal for cutting stainless and mild sheet steel, plasterboard, wood, and thin non-metallics.

- With extra cobalt for enhanced heat and wear resistance - improving the product life
- The 5.5 TPI positive rake tooth form provides less torque for a smoother, faster cut in all materials
- 30% extra gullet volume for better material penetration.
- Ideal for 3mm stainless steel, mild steel sheet and tubes and other materials with a thickness of up to 13mm
- Size range: 14mm - 210mm
- 41mm (1.5/8") hole saw depth

**Applications:** Stainless Steel Sheeting, Tool & Mild Steel Sheeting, Wood, Trunking, Plastics & Non-Metallics

**Material:** High-Speed Steel



Code	Size	Arbors
FCH0238	60	
FCH0212	64	
FCH0296	65	
FCH0258	67	
FCH068M	68	
FCH0234	70	
FCH0278	73	
FCH0300	76	
FCH0318	79	
FCH0314	83	
FCH0338	86	
FCH0312	89	A2
FCH0358	92	
FCH0334	95	A10
FCH0378	98	
FCH0400	102	
FCH0418	105	
FCH0414	108	
FCH0438	111	A2-1 (SDS Plus)
FCH0412	114	
FCH0434	121	
FCH0500	127	
FCH0514	133	
FCH0512	140	
FCH0600	152	
FCH160M	160	
FCH168M	168	
FCH177M	177	
FCH210M	210	

Hole Saw Depth	41mm 1.5/8"
Rec. Cutting Depth	
<3mm	✓
3-13mm	✓
>13mm	✗
• Metal • Inox (Stainless) • Non Ferrous Materials	★★
Cast iron	★
Wood	★
Veneer	★
Plastic	★
Acrylic	★
Fibreglass	★
Formica	★
Plaster	★
Suspended Floors	★



## BI-METAL CUTTING



### Fast Cut Hole Saws Kits

Starrett Hole Saw Kits meticulously selected in size to precisely meet the unique requirements of various trades. Supplied in unbreakable EVA cases for ultimate protection.

**Applications:** Stainless Steel Sheet, Tool & Mild Steel Sheet, Wood, Trunking, Plastics & Non-Metallics

**Material:** High-Speed Steel



Code	Description	Hole Saw Size	Arbors
KFC06022	Electricians Kit	16mm, 20mm, 25mm, 29mm, 44mm & 51mm	A1 & A10 Arbors
KFC06021	Electricians Kit 1	16mm, 20mm, 25mm, 32mm, 40mm & 51mm	A1 & A10 Arbors
KFC06023	General Purpose Kit	22mm, 29mm, 35mm, 44mm, 51mm & 64mm	A1 & A10 Arbors
KFC11021	Deluxe Electricians Kit	16mm, 20mm, 22mm, 25mm, 29mm, 35mm, 44mm, 51mm, 64mm, 68mm, & 76mm	A1 & A2 Arbors
KFC07021	Plumber Kit	19mm, 22mm, 29mm, 38mm, 44mm, 51mm & 57mm	A1 & A10 Arbors
KFC11022	Deluxe Plumbers Kit	16mm, 19mm, 22mm, 29mm, 35mm, 38mm, 44mm, 51mm, 57mm, 65mm & 68mm	A1 & A2 Arbors
KFC12021	Plumbers & Electricians Kit	16mm, 20mm, 22mm, 29mm, 35mm, 38mm, 40mm, 44mm, 51mm, 57mm, 65mm, & 68mm	A1 & A2 Arbors

### Arbors

Code	Description	Fits Hole Saw Dia.	Shank Size
A1	Arbor	14-30	8.75 (11/32")
A2	Arbor	32-210	11mm (7/16")
A4	Arbor	14-30	6.5mm (1/4")
A10	Arbor	32-210	8.75 (11/32")
A1-1	Arbor	14-30	SDS Plus
A2-1	Arbor	32-210	SDS Plus
A014C	79mm Pilot Drill	14-210	-
A014CE	92mm Pilot Drill	14-210	-



### Arbor Extension Bar & Adaptor Nut

Code	Description	For Use With	Fits Chuck Size
A15	Arbor Extension 300mm Long	A1, A10 Arbors	9.5mm (3/8")
A5	Arbor Extension 300mm Long	A2 Arbor	13mm (1/2")
KA12	Arbor Adaptor Nut Allows Use Up To 152mm	A1, A4 & A1-1	-

