



# ArmaKit<sup>®</sup>

INDUSTRIAL CABLE GLANDS



# Cable Glands | NEW RANGE

WHAT'S NEW IN... INDUSTRIAL CABLE GLANDS

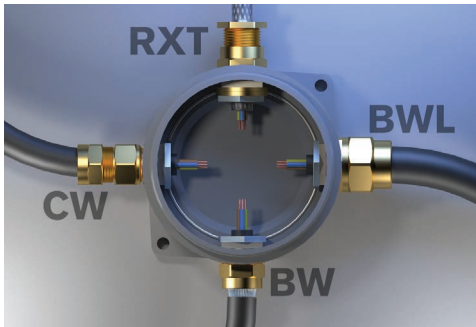
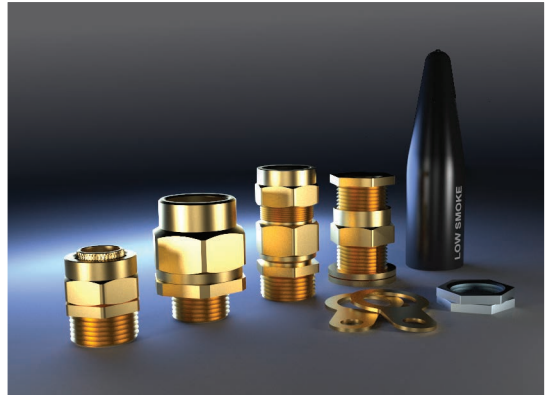
# Cable Glands

## Industrial

### ArmaKit®

ArmaKit® Gland Kits provide the highest degree of functionality and safety. Manufactured from tough extrusion brass and supplied with LSF shrouds they are the last word when it comes to quality cable termination.

The ArmaKit® Gland range is designed to terminate Steel Wire Armour or Braided cable with options from indoor to full IP66 outdoor weather protection.



### ArmaKit Glands®

ArmaKit® is a range of high quality brass cable glands designed and manufactured to exceed international standards.

Material: Brass BS 2874 CZ121 Pb3  
Shroud: Dip-Moulded LSF PVC  
Temp: -20°C to 80°C



By Remora Electrical

For more information on these and other Remora products, please visit our website at [www.remora.net](http://www.remora.net)

ArmaKit® brand cable glands are offered for sale exclusively in the United Kingdom by Remora Electrical Limited.

### Introducing ArmaKit® – A premium range of industrial grade, low smoke cable glands for industrial and commercial use

Economy with Responsibility; our industrial kits have been designed to provide an economical range of glands while avoiding the compromises that are typically made with 'economy' kits. **ISO 9001 certification** from the factory to the customer, ensures the highest manufacturing tolerances are adhered to and that all glands in the range fully conform to British and International standards (**BS 6121-1:2005 / EN50262 / EN 60529**).

Safety and Reliability; Taking into account the Health & Safety requirements for people occupying public buildings and in public places, all Remora kits in this range are now supplied with **dip-moulded PVC Low Smoke shrouds** as standard. Specially formulated from low-halogen compounds, these shrouds reduce the risk of smoke and toxic fume inhalation. On-site feedback has also shown that the increased pliability of these shrouds makes them easier to work with and install.

Suitable for a wide range of applications, from light commercial use to manufacturing machinery and measurement and control equipment, you can be confident that only top quality materials and design practices have been used.



Low Smoke and Fume.

ArmaKit Glands® are supplied with dip-moulded PVC Low Smoke shrouds as standard. Specially formulated from low-halogen compounds, these shrouds reduce the risk of smoke and toxic fume inhalation. Tested to UL94 V1.



This is the IP code necessary to prevent access to hazardous parts by fingers and protects the equipment inside the enclosure against ingress of solid foreign objects having a diameter of 12.5mm and greater.



IP54 is the minimum recommended IP code that should be used for equipment installed outdoors. IP54 rated glands offer protection against dust and water splashed from all directions. Ingress of dust is not totally prevented but dust shall not penetrate in sufficient quantity to impair safety. Water splashed against the enclosure from any direction shall have no harmful effects.



IP66 is recommended for when harsher environmental conditions are anticipated. IP66 rated glands completely prevent the ingress of dust and powerful jets of water from any direction. ArmaKit® CW and RXT glands offer IP66 protection if fitted with a sealing washer.



ArmaKit Glands® are designed and tested to maintain ingress protection standards across a wide range of operating temperatures. All kits cover a minimum operating temperature range of -20°C to 80°C.



Mechanical Resistance.

Manufactured from BS 2874 CZ121 Pb3 extruded brass rod, ArmaKit Glands® offer increased resistance to impact and shearing stress. Beware of cheaper glands manufactured from sand cast brass.



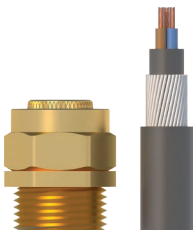
Wide Range.

The ArmaKit® range of glands is designed to accommodate all typical cable sizes, ranging from 7.0mm up to 78.0mm OD.



Certification.

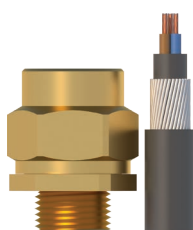
ArmaKit Glands® are certified to the highest international standards.



Steel Wire Armour

## BW

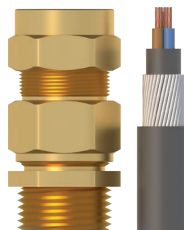
Indoor



Steel Wire Armour

## BWL

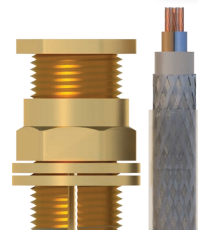
Indoor/Outdoor



Steel Wire Armour

## CW

Indoor/Outdoor



Braided Armour

## RXT

Indoor/Outdoor

WHAT'S NEW IN... INDUSTRIAL CABLE GLANDS

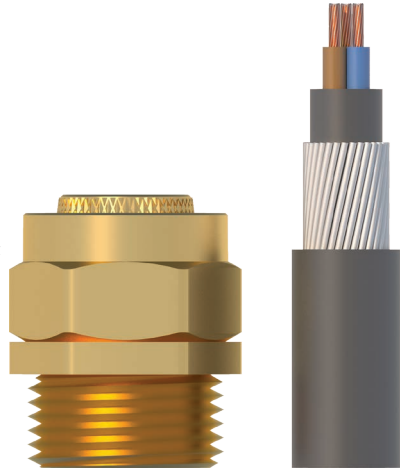
## BW ArmaKit Industrial Grade Low Smoke

### Steel Wire Armour Cable Glands

#### Low Smoke and Acid Fume Emission

The ArmaKit® BW Gland is a two-part brass cable gland designed for use with all Steel Wire Armoured PVC and LSF cables. BW glands do not have an inner seal and as such provide minimal ingress protection against dust and liquid, they are only recommended for use in indoor, liquid and dust-free environments.

Cable retention and earth continuity is achieved via mechanical clamping of the cable armour against the low-resistance knurled internal cone.



### ArmaKit® BW Gland Kits

- For indoor use.
- Two-part handling, no loose parts.
- Precision manufactured from high quality extrusion brass.
- Supplied in kits containing;
  - M20s-M32 2 glands, 2 locknuts, 2 earth tags, 2 LSF shrouds
  - M40-M75 1 gland, 1 locknut, 1 earth tag, 1 LSF shroud

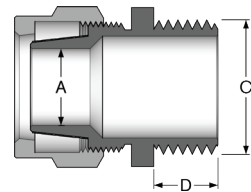
**Standards:** EN 60529  
BS 6121-1:2005

**Protection:** IP2X

**Temperature Range:** -80°C to 300°C

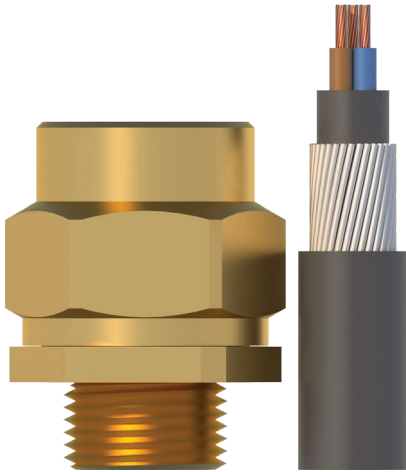
**Material (Gland):** Brass BS 2874 CZ121 Pb3

**Material (Shroud):** LSF Polyvinyl-chloride



Code	Cable OD (A)		Armour Dia		Size (C)	Entry Thread	Length (D)	Box Quantity	Carton Quantity
	Min	Max	Min	Max					
PGPBW20sLS	11.4	15.5	0.90	1.25	M20 x 1.5	10.0	20	120	
PGPBW20LS	14.6	18.3	0.90	1.25	M20 x 1.5	10.0	10	80	
PGPBW25LS	20.0	25.4	1.25	1.60	M25 x 1.5	10.0	10	60	
PGPBW32LS	26.6	32.2	1.60	2.00	M32 x 1.5	10.0	5	40	
PGPBW40LS	31.1	38.5	1.60	2.00	M40 x 1.5	15.0	5	40	
PGPBW50LS	42.4	52.0	2.00	2.50	M50 x 1.5	15.0	5	30	
PGPBW63LS	55.2	64.7	2.00	2.50	M63 x 1.5	15.0	2	24	
PGPBW75LS	67.7	78.0	2.00	2.50	M75 x 1.5	15.0	1	8	

ArmaKit® brand cable glands are offered for sale exclusively in the United Kingdom by Remora Electrical Limited.



# BWL ArmaKit

## Industrial Grade Low Smoke

### Heavy Duty Steel Wire Armour Cable Glands

#### Low Smoke and Acid Fume Emission

The ArmaKit® BWL Gland is a three-part brass cable gland designed for use with all Steel Wire Armoured PVC and LSF cables. Heavier than the standard BW the BWL offers increased resistance to mechanical impact and has a longer body, providing greater protection to the armour wires from damage and impact. The three-part design of the BWL also prevents twisting of the armour wires during installation.

BWL glands do not have an inner seal and as such provide minimal ingress protection against dust and liquid, they are only recommended for use in indoor, liquid and dust-free environments.

Cable retention and earth continuity is achieved via mechanical clamping of the cable armour.

### ArmaKit® BWL Gland Kits

- For indoor use.
- Three-part, increased cable safety.
- Heavy Duty, increased cable protection.
- Precision manufactured from high quality extrusion brass.
- Supplied in kits containing;
- M20s-M32 2 glands, 2 locknuts, 2 earth tags, 2 LSF shrouds
- M40-M75 1 gland, 1 locknut, 1 earth tag, 1 LSF shroud

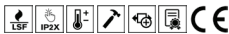
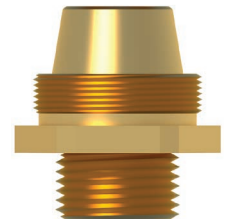
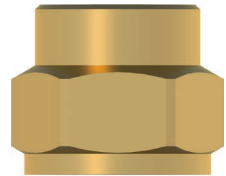
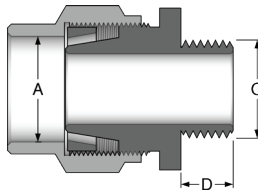
**Standards:** EN 60529  
BS 6121-1:2005

**Protection:** IP2X

**Temperature Range:** -80°C to 300°C

**Material (Gland):** Brass BS 2874 CZ121 Pb3

**Material (Shroud):** LSF Polyvinyl-chloride



Code	Cable OD (A)		Armour Dia		Entry Thread		Box	Carton
	Min	Max	Min	Max	Size (C)	Length (D)	Quantity	Quantity
BWLK/M20sLS	11.8	15.8	0.9	1.25	M20 x 1.5	10.0	10	50
BWLK/M20LS	13.8	20.8	0.9	1.25	M20 x 1.5	10.0	8	50
BWLK/M25LS	19.8	27.5	1.25	1.60	M25 x 1.5	10.0	5	50
BWLK/M32LS	26.4	33.5	1.60	2.00	M32 x 1.5	10.0	5	30

# CW ArmaKit

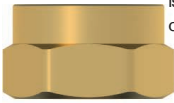
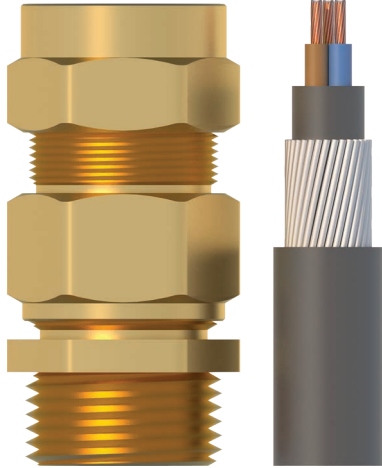
## Industrial Grade Low Smoke

### Steel Wire Armour

### Low Smoke and Acid Fume Emission

The ArmaKit® CW Gland is a four-part gland designed for use with all Steel Wire Armoured PVC and LSF cables. The integral polychloroprene environmental seal provides full protection against high power jets of liquid and is 100% dust tight. The separate cone-and-ring design of the three-part ArmaKit® CW Gland prevents twisting of the armour wires during installation and an internal brass washer ensures the seal will not deform as the glands are torqued down.

Cable retention and earth continuity is achieved via mechanical clamping of the cable armour by the internal cone-and-ring.



### ArmaKit® CW Gland Kits

- For indoor or outdoor use.
- Four-part handling, no loose parts.
- Precision manufactured from high quality extrusion brass.
- Supplied in kits containing;
- M20s-M32 2 glands, 2 locknuts, 2 earth tags, 2 LSF shrouds
- M40-M75 1 gland, 1 locknut, 1 earth tag, 1 LSF shroud

**Standards:** EN 60529  
EN 50262

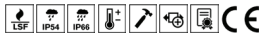
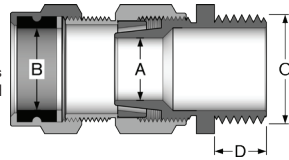
**Protection:** IP66 (If fitted with sealing washer)

**Temperature Range:** -20°C to 80°C

**Material (Gland):** Brass BS 2874 CZ121 Pb3

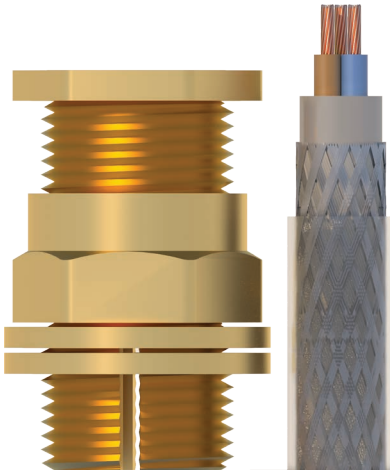
**Material (Seal):** Polychloroprene

**Material (Shroud):** LSF Polyvinyl-chloride



Code	Bedding (A)		Cable OD (B)		Armour Dia	Entry Thread		Box	Carton
	Max	Min	Max	Max	Max	Size (C)	Length (D)	Quantity	Quantity
PGPCW20sLS	11.8	12.8	15.5		0.90	M20 x 1.5	10.0	10	80
PGPCW20LS	13.6	15.5	19.5		0.90	M20 x 1.5	10.0	10	60
PGPCW25LS	20.0	22.0	26.5		1.25	M25 x 1.5	10.0	5	40
PGPCW32LS	26.5	26.0	33.5		1.60	M32 x 1.5	10.0	5	30
PGPCW40LS	32.1	33.0	39.5		1.60	M40 x 1.5	15.0	5	30
PGPCW50LS	42.4	45.0	52.0		2.00	M50 x 1.5	15.0	2	24
PGPCW63LS	55.2	59.0	66.0		2.50	M63 x 1.5	15.0	2	12
PGPCW75LS	67.0	70.0	78.0		2.50	M75 x 1.5	15.0	1	8

OUTDOOR FLEXIBLE BRAID CABLE GLANDS



# RXT ArmaKit

## Industrial Grade Low Smoke

### Flexible Wire Braid Armour

### Low Smoke and Acid Fume Emission

The ArmaKit® RXT Gland is a two-part gland designed for use with all types of screened flexible wire braid, or wire braid armour cables. An integral polychloroprene environmental seal provides full protection against high power jets of liquid and is 100% dust tight, an internal brass washer ensures the seal will not deform as the glands are torqued down.

ArmaKit® RXT Glands are suitable for use in indoor or outdoor environments where moisture or dust exposure is anticipated.

### ArmaKit® RXT Gland Kits

- For indoor use or outdoor use.
- Two-part.
- Precision manufactured from high quality extrusion brass.
- Supplied in kits containing;
- M20s-M32 2 glands, 2 locknuts, 2 earth tags, 2 LSF shrouds
- M40-M75 1 gland, 1 locknut, 1 earth tag, 1 LSF shroud

**Standards:** EN 60529  
EN 50262

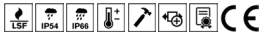
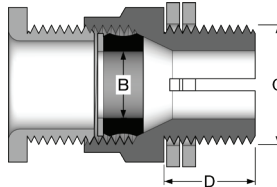
**Protection:** IP66 (If fitted with sealing washer)

**Temperature Range:** -20°C to 80°C

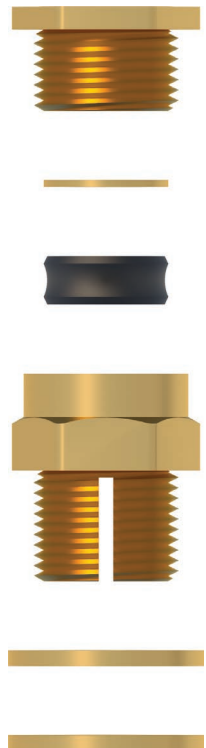
**Material (Gland):** Brass BS 2874 CZ121 Pb3

**Material (Seal):** Polychloroprene

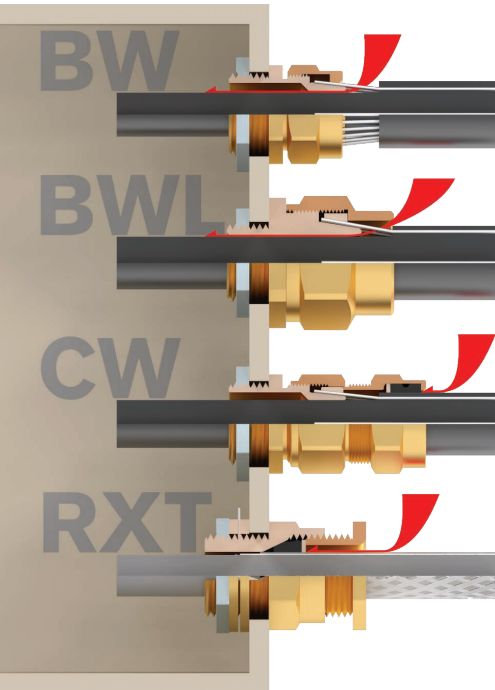
**Material (Shroud):** LSF Polyvinyl-chloride



Code	Cable OD (B)		Entry Thread	Size (C)	Length (D)	Box Quantity	Carton Quantity
	Min	Max					
RXT20sLS	7.0	11.6	M20 x 1.5	15.0	10	80	
RXT20LS	10.5	13.6	M20 x 1.5	15.0	10	80	
RXT25LS	12.5	19.8	M25 x 1.5	15.0	5	30	
RXT32LS	18.5	26.3	M32 x 1.5	15.0	5	30	



# Gland Selection



### Indoor

BW - Armakit® PGPBWxxLS

- Designed for indoor use.
- Terminates via cable armour providing earth continuity and cable retention.
- No outer seal.

### Indoor - Heavy Duty

BWL - Armakit® BWLK2/MxxLS

- Designed for indoor use.
- Terminates via cable armour providing earth continuity and cable retention.
- No outer seal.

### Outdoor - Steel Wire Armour (SWA)

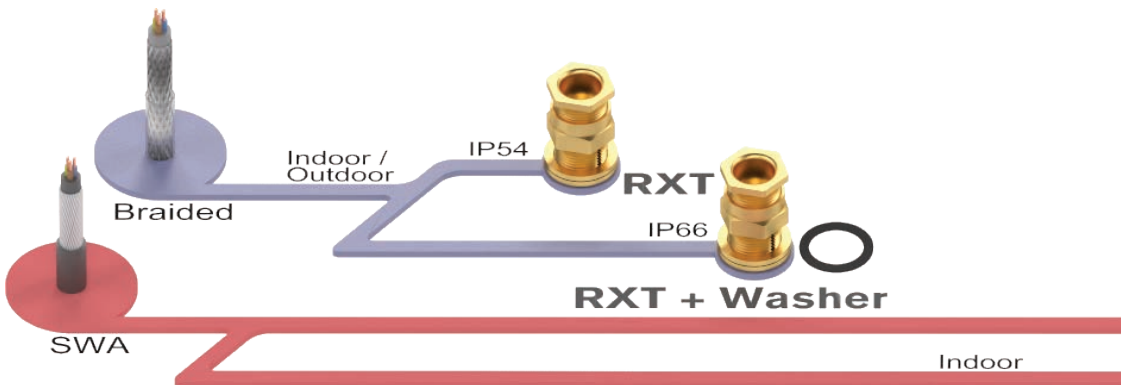
CW - Armakit® PGPCWxxLS

- Designed for indoor and outdoor use.
- Terminates via cable armour providing earth continuity and cable retention.
- Outer seal provides ingress protection against dust and liquid up to IP66.
- To achieve IP66 a sealing washer must be used between the gland and housing.

### Outdoor - Braided

RXT - Armakit® RXTxxLS

- Designed for indoor and outdoor use.
- Braid is terminated by clamping between earthing washers providing continuity.
- Outer seal provides ingress protection against dust and liquid up to IP66.
- To achieve IP66 a sealing washer must be used between the gland and housing.



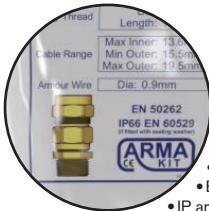


# Packaging

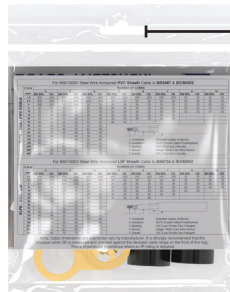
For your convenience all ArmaKit Glands® are supplied in kits. A kit consists of; two glands, two locknuts, two earth tags and two PVC LSF shrouds (up to M32). Above M32 a kit consists of; one gland, one locknut, one earth tag and one PVC LSF shroud. All kits are packaged in premium printed polyethylene bags, boxes and cartons, small box quantities range from 1-20 (Please see tables on pages 3-6) Shipped in strong double-wall cartons via express next-day courier.



- Bagged in premium polyethylene
- 500 gauge
- Strong
- Presentable



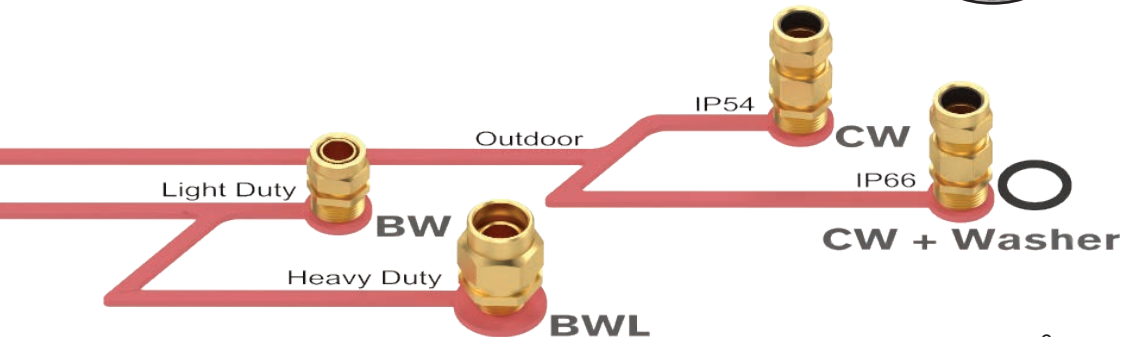
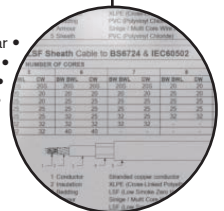
- Important selection info on the front
- Quick and easy to read
- Cable and Armour acceptance ranges
- Entry thread specifics
- IP and standards



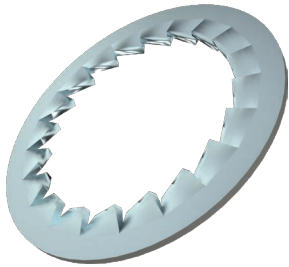
- Detailed sizing charts on rear
- BS5467
- BS6724
- IEC60502



- Euro Hole
- Great for retail and display



# Accessories



## BZP Serrated Washers

- ISO Metric range.
- Bright Zinc Plated Serrated Washers.
- Anti-Vibration.
- Corrosion Resistant.

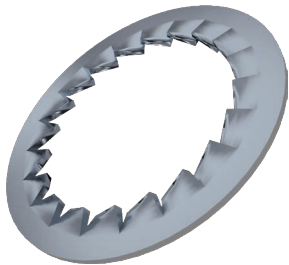
**Standards:** DIN 6798

**Temperature Range:** 250°C Max

**Material:** BZP Steel



Code	Gland Entry	Bag Quantity
M16WSER	M16	100
M20WSER	M20	100
M25WSER	M25	100
M32WSER	M32	100
M40WSER	M40	100
M50WSER	M50	50
M63WSER	M63	50
M75WSER	M75	50



## Stainless Steel Serrated Washers

- ISO Metric range.
- 316 (A2) Stainless Steel Serrated Washers.
- Anti-Vibration.
- Very High Corrosion Resistance.

**Standards:** DIN 6798

**Temperature Range:** 250°C

**Material:** 316 (A4) Stainless Steel



Code	Gland Entry	Bag Quantity
SSM16WSER	M16	100
SSM20WSER	M20	100
SSM25WSER	M25	100
SSM32WSER	M32	100
SSM40WSER	M40	100
SSM50WSER	M50	50
SSM63WSER	M63	50
SSM75WSER	M75	50

### Nylon Sealing Washers

• ISO Metric range.

**Standards:** FDA and BFR Compliant  
UL94 HB

**Temperature Range:** -40°C to 85°C

**Material:** PA6 Nylon (ISO 1043)



Code	Gland Entry	Bag Quantity
NW16	M16	100
NW20	M20	100
NW25	M25	100
NW32	M32	100
NW40	M40	100
NW50	M50	50
NW63	M63	50
NW75	M75	50



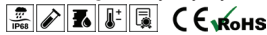
### HDPE Sealing Washers

• ISO Metric range.

**Standards:** UL94 HB  
DIN 8075

**Temperature Range:** -40°C to 100°C (static)

**Material:** High Density Polyethylene (HDPE DIN 8075)



Code	Gland Entry	Bag Quantity
805516	M16	100
805520	M20	100
805525	M25	100
805532	M32	100
805540	M40	100
805550	M50	50
805563	M63	50
805575	M75	50



### Fibre Sealing Washers

• ISO Metric range.

**Standards:** IEC 667  
BS 6091  
ASTM D710

**Temperature Range:** 0°C to 100°C

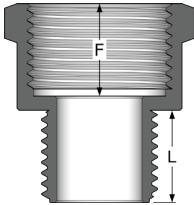
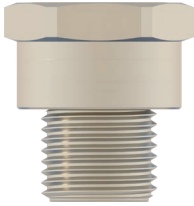
**Material:** Vulcanised fibre



Code	Gland Entry	Bag Quantity
FW16	M16	100
FW20	M20	100
FW25	M25	100
FW32	M32	100
FW40	M40	100
FW50	M50	50
FW63	M63	50
FW75	M75	50

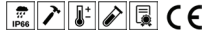


## WHAT'S NEW IN... THREAD CONVERTORS

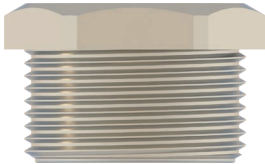


### Metric-Metric Industrial Adaptors

- ISO Metric range.
- Application; Machines, Devices, Housings, Panels
- Standards:** EN 50262
- Protection:** IP54 (IP66 if fitted with sealing washer)
- Temperature Range:** -60°C to 200°C
- Material:** Nickel Plated Brass

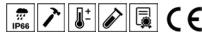


Code	Entry Thread		Thread Length		Bag Quantity
	Male	Female	Male (L)	Female (F)	
AM16M20S	M16 x 1.5	M20 x 1.5	13.0	13.0	10
AM20M25S	M20 x 1.5	M25 x 1.5	13.0	13.0	10
AM25M32S	M25 x 1.5	M32 x 1.5	13.0	13.0	10
AM32M40S	M32 x 1.5	M40 x 1.5	13.0	15.0	10
AM40M50S	M40 x 1.5	M50 x 1.5	13.0	15.0	10
AM50M63S	M50 x 1.5	M63 x 1.5	13.0	15.0	10
AM63M75S	M63 x 1.5	M75 x 1.5	13.0	18.0	5



### Metric-Metric Industrial Reducers

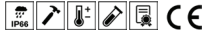
- ISO Metric range.
- Application; Machines, Devices, Housings, Panels
- Standards:** EN 50262
- Protection:** IP54 (IP66 if fitted with sealing washer)
- Temperature Range:** -60°C to 200°C
- Material:** Nickel Plated Brass



Code	Entry Thread		Thread Length		Bag Quantity
	Male	Female	Male (L)	Female (F)	
RM16M12S	M16 x 1.5	M12 x 1.5	10.0		10
RM20M12S	M20 x 1.5	M12 x 1.5	13.0		10
RM20M16S	M20 x 1.5	M16 x 1.5	13.0		10
RM25M16S	M25 x 1.5	M16 x 1.5	13.0		10
RM25M20S	M25 x 1.5	M20 x 1.5	13.0		10
RM32M20S	M32 x 1.5	M20 x 1.5	13.0		10
RM32M25S	M32 x 1.5	M25 x 1.5	13.0		10
RM40M20S	M40 x 1.5	M20 x 1.5	13.0		10
RM40M25S	M40 x 1.5	M25 x 1.5	13.0		10
RM40M32S	M40 x 1.5	M32 x 1.5	13.0		10
RM50M20S	M50 x 1.5	M20 x 1.5	13.0		10
RM50M25S	M50 x 1.5	M25 x 1.5	13.0		10
RM50M32S	M50 x 1.5	M32 x 1.5	13.0		10
RM50M40S	M50 x 1.5	M40 x 1.5	13.0		10
RM63M20S	M63 x 1.5	M20 x 1.5	13.0		10
RM63M25S	M63 x 1.5	M25 x 1.5	13.0		10
RM63M32S	M63 x 1.5	M32 x 1.5	13.0		10
RM63M40S	M63 x 1.5	M40 x 1.5	13.0		10
RM63M50S	M63 x 1.5	M50 x 1.5	13.0		10
RM75M63S	M75 x 1.5	M63 x 1.5	13.0		5

### PG-Metric Industrial Adaptors

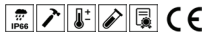
- PG-ISO Metric range.
- Application; Machines, Devices, Housings, Panels
- Standards:** EN 50262
- Protection:** IP54 (IP66 if fitted with sealing washer)
- Temperature Range:** -60°C to 200°C
- Material:** Nickel Plated Brass



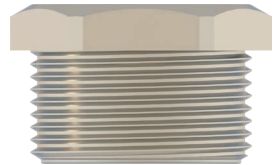
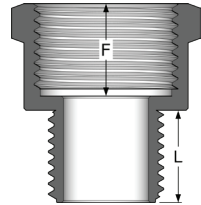
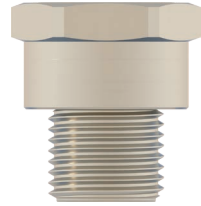
Code	Entry Thread		Thread Length		Bag Quantity
	Male	Female	Male (L)	Female (F)	
APG9M16S	PG9 x 1.41	M16 x 1.5	13.0	13.0	10
APG9M20S	PG9 x 1.41	M20 x 1.5	13.0	13.0	10
APG11M16S	PG11 x 1.41	M16 x 1.5	13.0	13.0	10
APG11M20S	PG11 x 1.41	M20 x 1.5	13.0	13.0	10
APG13M20S	PG13 x 1.41	M20 x 1.5	13.0	13.0	10
APG13M25S	PG13 x 1.41	M25 x 1.5	13.0	13.0	10
APG16M25S	PG16 x 1.41	M25 x 1.5	13.0	13.0	10
APG21M32S	PG21 x 1.58	M32 x 1.5	13.0	13.0	10
APG29M40S	PG29 x 1.58	M40 x 1.5	13.0	15.0	10
APG36M50S	PG36 x 1.58	M50 x 1.5	13.0	15.0	10
APG42M63S	PG42 x 1.58	M63 x 1.5	13.0	15.0	5

### PG-Metric Industrial Reducers

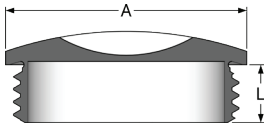
- PG-ISO Metric range.
- Application; Machines, Devices, Housings, Panels
- Standards:** EN 50262
- Protection:** IP54 (IP66 if fitted with sealing washer)
- Temperature Range:** -60°C to 200°C
- Material:** Nickel Plated Brass



Code	Entry Thread		Thread Length		Bag Quantity
	Male	Female	Male (L)	Female (F)	
RPG16M20S	PG16 x 1.41	M20 x 1.5	13.0	10	
RPG21M20S	PG21 x 1.58	M20 x 1.5	13.0	10	
RPG21M25S	PG21 x 1.58	M25 x 1.5	13.0	10	
RPG29M20S	PG29 x 1.58	M20 x 1.5	13.0	10	
RPG29M25S	PG29 x 1.58	M25 x 1.5	13.0	10	
RPG29M32S	PG29 x 1.58	M32 x 1.5	13.0	10	
RPG36M25S	PG36 x 1.58	M25 x 1.5	13.0	10	
RPG36M32S	PG36 x 1.58	M32 x 1.5	13.0	10	
RPG36M40S	PG36 x 1.58	M40 x 1.5	13.0	10	
RPG42M32S	PG42 x 1.58	M32 x 1.5	13.0	10	
RPG42M40S	PG42 x 1.58	M40 x 1.5	13.0	10	
RPG42M50S	PG42 x 1.58	M50 x 1.5	13.0	10	
RPG48M32S	PG48 x 1.58	M32 x 1.5	13.0	10	
RPG48M40S	PG48 x 1.58	M40 x 1.5	13.0	10	
RPG48M50S	PG48 x 1.58	M50 x 1.5	13.0	10	

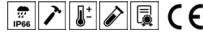


## WHAT'S NEW IN... NYLON CABLE GLANDS

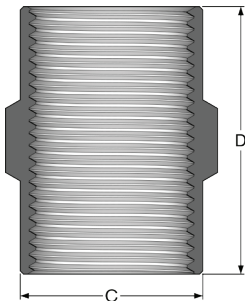
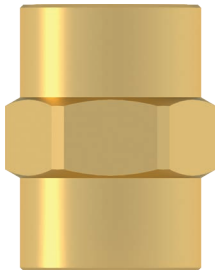


### Industrial Dome Head Stopping Plugs

- ISO Metric and PG range.
- Application; Machines, Devices, Housings, Panels
- Standards:** EN 50262
- Protection:** IP54 (IP66 if fitted with sealing washer)
- Temperature Range:** -60°C to 200°C
- Material:** Nickel Plated Brass



Code	Male	Length (L)	Cap Diameter (A)	Bag Quantity
EMVS12	M15 x 1.5	5.0	14.0	100
EMVS16	M16 x 1.5	6.0	18.0	100
EMVS20	M20 x 1.5	6.5	22.0	100
EMVS25	M25 x 1.5	7.0	28.0	100
EMVS32	M32 x 1.5	8.0	35.0	100
EMVS40	M40 x 1.5	8.5	44.0	50
EMVS50	M50 x 1.5	9.0	54.0	25
EMVS63	M63 x 1.5	10.0	67.0	10
MV7	PG7 x 1.27	5.0	14.0	100
MV9	PG9 x 1.41	6.0	17.0	100
MV11	PG11 x 1.41	6.0	20.0	100
MV13	PG13 x 1.41	6.5	22.0	100
MV16	PG16 x 1.41	6.5	24.0	100
MV21	PG21 x 1.59	7.0	30.0	100
MV29	PG29 x 1.59	8.0	39.0	50
MV36	PG36 x 1.59	9.0	50.0	25
MV42	PG42 x 1.59	10.0	57.0	25
MV48	PG48 x 1.59	10.0	64.0	10



### Brass Couplers

- ISO Metric range.
- Application; Machines, Devices, Housings, Panels
- Standards:** EN 50262
- Temperature Range:** -60°C to 200°C
- Material:** Brass



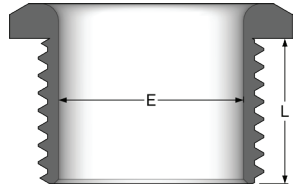
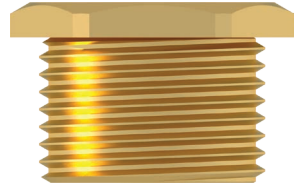
Code	Entry Thread	Length (D)	Diameter (C)	Bag Quantity
CM20M20	M20 x 1.5	33.0	22.5	50
CM25M25	M25 x 1.5	34.0	27.0	50
CM32M32	M32 x 1.5	38.0	34.2	25
CM40M40	M40 x 1.5	40.0	42.6	20
CM50M50	M50 x 1.5	41.0	53.0	10
CM63M63	M63 x 1.5	43.0	66.4	5
CM75M75	M75 x 1.5	45.0	78.8	5

### Male Brass Bushes

- ISO Metric range.
- Application; Machines, Devices, Housings, Panels
- Standards:** EN 50262
- Temperature Range:** -60°C to 200°C
- Material:** Brass



Code	Entry Thread	Thread Length (L)	Bore (E)	Bag Quantity
MBBM20	M20 x 1.5	12.5	16.0	50
MBBM25	M25 x 1.5	13.0	21.3	50
MBBM32	M32 x 1.5	14.5	27.7	25
MBBM40	M40 x 1.5	15.0	34.5	20
MBBM50	M50 x 1.5	15.0	44.7	10
MBBM63	M63 x 1.5	15.5	56.5	5
MBBM75	M75 x 1.5	16.5	68.5	5

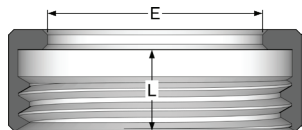


### Female Brass Bushes

- ISO Metric range.
- Application; Machines, Devices, Housings, Panels
- Standards:** EN 50262
- Temperature Range:** -60°C to 200°C
- Material:** Brass



Code	Entry Thread	Thread Length (L)	Bore (E)	Bag Quantity
FBBM20	M20 x 1.5	6.0	16.0	50
FBBM25	M25 x 1.5	5.5	21.3	50
FBBM32	M32 x 1.5	5.0	27.7	25
FBBM40	M40 x 1.5	7.0	34.5	20
FBBM50	M50 x 1.5	9.0	44.7	10
FBBM63	M63 x 1.5	12.0	56.5	5
FBBM75	M75 x 1.5	15.0	68.5	5



# *Remora Electrical* - Your partner supplying cable glands and accessories

*Distributed By*



*Remora Electrical 02201502*