

Joining | CABLE DUCT SEALING SYSTEM

RE-ENTERABLE CABLE DUCT SEALING SYSTEM

FiloSeal+HD

Re-enterable Duct Sealing System

FiloSeal+HD provides a strong support system using the hexagonal tubes which builds up like a honeycomb structure. FiloSeal+HD is suitable for sealing any cable configuration or pipes contained in one duct and also allows easy re-entry of the seal to add or remove cables or pipes as required

The duct sealing system FiloSeal+HD uses our MD+ sealant which is easily applied from a skeleton gun. The high quality, one component, flexible sealant "MD+" is based on a Silicone compound that cures with air (Humidity).

After application and full curing the thixotropic MD+ forms a plastic elastomer mass with special qualities effectively sealing and bonding, while providing a high level of durability

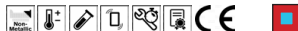


Re-Enterable Duct Sealing System

- Flexible, one component, adhesive and sealing compound
- High levels of Gas and Water tightness
- Excellent adhesion, applicable to all common building materials
- Shows Fire resistance properties
- Resistant against Water, Alkaline, Chemical agents
- Resistant to termites (Mastotermes Darwiniensis) Northern Australian termites
- Resistant to Rats
- Resistant to Hydrogen Sulphide / Methane and many other Gases (NedLab)
- Non corrosive
- Solvent free
- Shock absorbing
- Non toxic, neutral and almost odourless
- Complies with ATEX regulations
- Suitable for any shaped duct / bore hole / opening
- Quick and easy installation
- Seals all known materials, PVC & PE sheathed cables, PILC, (HD) PE pipes
- Suitable for renovations, can be installed retrospectively
- Over 25 years of operational experience



- Density:** 1.2 gr/cm³
- Pressure:** up to 2 bar
- Pulling Force:** 100kg
- Flow:** <2mm ISO 7390
- Colour:** Red-Brown
- Skin Over Time:** +15minutes
- Curing Time:** 3mm / 24 hours
- Hardness:** 30 shore A - DIN 53505
- Elongation:** 100% - DIN53504
- Tensile Strength:** 0.8 N/mm² - DIN53504
- Operating Temp:** +5°C to 40°C
- Temperature Resistance:** -40°C to 120°C



Code	Description	Max Duct Diameter mm	Max Cable Diameter in Duct	Pressure Resistance
FS+HD-110	FiloSeal+HD 110mm	Max 110.0	Ø 80 Max	Upto 2 bar
FS+HD-160	FiloSeal+HD 160mm	Max 160.0	Ø 130 Max	Upto 2 bar