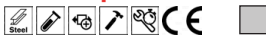
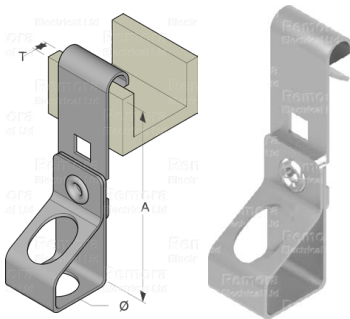


## PURLIN CLIPS

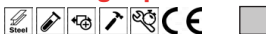
### Purlin Clips for Threaded Rod



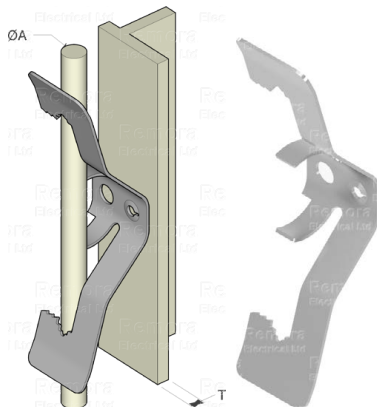
Code	(T)	Ø	(A)	Load		Material	
				Rating Kg	Finish	Box Qty	
AV155-AM127	1.5 - 4.0	12.7	70.0	68.0	F8+	25	
AV155-AM6T	1.5 - 4.0	M6	70.0	68.0	F8+	25	
AV155-AM8T	1.5 - 4.0	M8	70.0	68.0	F8+	25	
AV155-AM10T	1.5 - 4.0	M10	70.0	68.0	F8+	25	
AV57-AM127	5.0 - 7.0	12.7	70.0	68.0	F8+	25	
AV57-AM6T	5.0 - 7.0	M6	70.0	68.0	F8+	25	
AV57-AM8T	5.0 - 7.0	M8	70.0	68.0	F8+	25	
AV57-AM10T	5.0 - 7.0	M10	70.0	68.0	F8+	25	



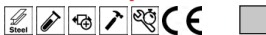
### Fastening Clips for Threaded Rod



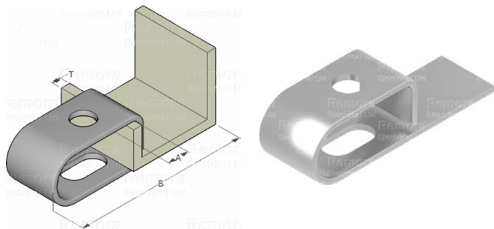
Code	Ø (A)	Fixing Size	Load		Material	
			Rating Kg	Finish	Box Qty	
FM-313T	M6 / M8 / M10	M4 / 6.5	10	F8+	100	
FM-320T	M6 / M8 / M10	M4 / 6.5	10	F8+	100	



### Purlin Clamp for Threaded Rod



Code	(T)	Ø	(A)	(B)	Load		Material	
					Rating Kg	Finish	Box Qty	
PD	≤ 4	12.0	15.0	85.0	40.0	F2	50	



Cable Glands  
Accs.  
Wiring Terminals  
Tube Lugs  
Tooling  
Earthing/Lighting  
Joining  
Heat-shrink  
Junction Boxes  
Cable Cleats  
Cable Ties  
MCC Cable  
Conduit